

## Anti-NBPF7P antibody (330-410 C-Term) (STJ94352)

STJ94352

### GENERAL INFORMATION

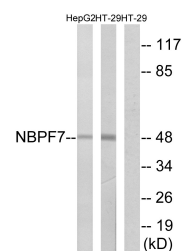
<b>Product Type</b>	Primary antibodies
<b>Short Description</b>	Rabbit polyclonal antibody anti-Putative Neuroblastoma Breakpoint Family Member 7 (330-410 C-Term) is suitable for use in Western Blot and ELISA research applications.
<b>Applications</b>	WB, ELISA
<b>Host/Source</b>	Rabbit
<b>Reactivity</b>	Human, Rat, Mouse

### PRODUCT PROPERTIES

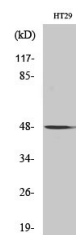
<b>Clonality</b>	Polyclonal
<b>Clone ID</b>	
<b>Concentration</b>	1 mg/mL
<b>Conjugation</b>	Unconjugated
<b>Purification</b>	The antibody was affinity-purified from rabbit anti-serum by affinity-chromatography.
<b>Dilution</b>	WB 1:500-1:2000
<b>Range</b>	ELISA 1:40000
<b>Formulation</b>	PBS, 50% Glycerol, 0.5% BSA and 0.02% Sodium Azide.
<b>Isotype</b>	IgG
<b>Storage</b>	Store at -20°C for up to 1 year from the date of receipt, and avoid repeat freeze-thaw cycles.
<b>Instruction</b>	

### TARGET INFORMATION

<b>Gene ID</b>	343505
<b>Gene Symbol</b>	NBPF7P
<b>Uniprot ID</b>	NBPF7_HUMAN
<b>Immunogen</b>	The antiserum was produced against synthesized peptide derived from human NBPF7 at amino acid range 361-410
<b>Immunogen Region</b>	330-410 C-Term
<b>Specificity</b>	NBPF7P polyclonal antibody (Putative Neuroblastoma Breakpoint Family Member 7) binds to endogenous Putative Neuroblastoma Breakpoint Family Member 7 at the amino acid region 330-410 C-Term.
<b>Immunogen Sequence</b>	



Western blot analysis of lysates from HT-29 and HepG2 cells, using NBPF7 Antibody. The lane on the right is blocked with the synthesized peptide.



Western blot analysis of various cells using NBPF7 Polyclonal Antibody

This product is suitable for in-vitro studies under the RESEARCH USE ONLY [RUO] licence. This product must not be used as for diagnostic or other medical purposes.  
 St John's Laboratory Ltd, Knowledge Dock Business Centre, University Way, London, E16 2RD | Tel: 0208 223 3081