

## Anti-NBPF1/9/10/12/14/15/16/20 antibody (700-780 C-Term) (STJ94349)

STJ94349

### GENERAL INFORMATION

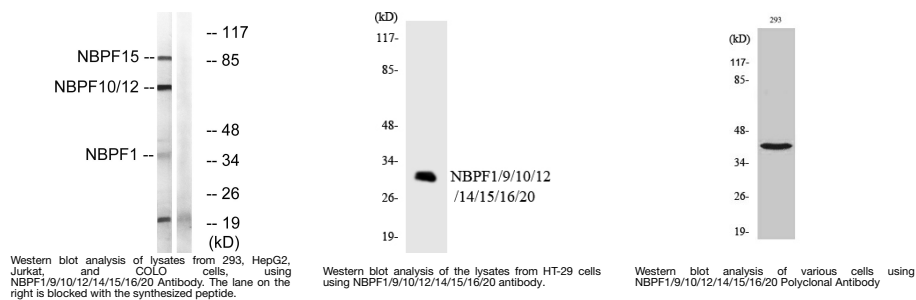
<b>Product Type</b>	Primary antibodies
<b>Short Description</b>	Rabbit polyclonal antibody anti-Neuroblastoma breakpoint family member 12 and Neuroblastoma breakpoint family member 10 and Neuroblastoma breakpoint family member 15 and Neuroblastoma breakpoint family member 1 and OBSOLETE and OBSOLETE and Neuroblas
<b>Applications</b>	WB, IHC-P, IF-P, ELISA
<b>Host/Source</b>	Rabbit
<b>Reactivity</b>	Human, Rat, Mouse

### PRODUCT PROPERTIES

<b>Clonality</b>	Polyclonal
<b>Clone ID</b>	
<b>Concentration</b>	1 mg/mL
<b>Conjugation</b>	Unconjugated
<b>Purification</b>	The antibody was affinity-purified from rabbit anti-serum by affinity-chromatography.
<b>Dilution Range</b>	WB 1:500-1:2000 IHC 1:100-1:300 ELISA 1:40000
<b>Formulation</b>	PBS, 50% Glycerol, 0.5% BSA and 0.02% Sodium Azide.
<b>Isotype</b>	IgG
<b>Storage Instruction</b>	Store at -20°C for up to 1 year from the date of receipt, and avoid repeat freeze-thaw cycles.

### TARGET INFORMATION

<b>Gene ID</b>	<a href="#">284565</a> <a href="#">55672</a> <a href="#">149013</a>
<b>Gene Symbol</b>	<a href="#">NBPF15</a> <a href="#">NBPF1</a> <a href="#">NBPFF_HUMAN</a> <a href="#">NBPF1_HUMAN</a> <a href="#">NBPFC_HUMAN</a>
<b>Immunogen</b>	The antiserum was produced against synthesized peptide derived from human NBPF1/9/10/12/14/15/16/20 at amino acid range 121-150
<b>Immunogen Region</b>	700-780 C-Term
<b>Specificity</b>	NBPF1/9/10/12/14/15/16/20 polyclonal antibody (Neuroblastoma breakpoint family member 12 and Neuroblastoma breakpoint family member 10 and Neuroblastoma breakpoint family member 15 and Neuroblastoma breakpoint family member 1 and OBSOLETE and OBSOLETE
<b>Immunogen Sequence</b>	



This product is suitable for in-vitro studies under the RESEARCH USE ONLY [RUO] licence. This product must not be used as for diagnostic or other medical purposes.  
St John's Laboratory Ltd, Knowledge Dock Business Centre, University Way, London, E16 2RD | Tel: 0208 223 3081