

Anti-CIAO3 antibody (360-440 C-Term) (STJ94345)

STJ94345

GENERAL INFORMATION

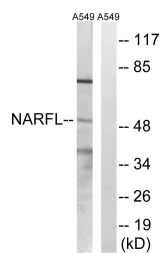
Product Type	Primary antibodies
Short Description	Rabbit polyclonal antibody anti-Cytosolic Iron-Sulfur Assembly Component 3 (360-440 C-Term) is suitable for use in Western Blot, Immunohistochemistry, Immunofluorescence and ELISA research applications.
Applications	WB, IHC-P, IF-P, ELISA
Host/Source	Rabbit
Reactivity	Human, Rat, Mouse

PRODUCT PROPERTIES

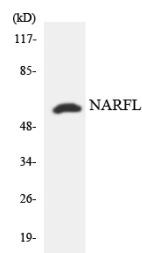
Clonality	Polyclonal
Clone ID	
Concentration	1 mg/mL
Conjugation	Unconjugated
Purification	The antibody was affinity-purified from rabbit anti-serum by affinity-chromatography.
Dilution Range	WB 1:500-1:2000 IHC 1:100-1:300 ELISA 1:40000
Formulation	PBS, 50% Glycerol, 0.5% BSA and 0.02% Sodium Azide.
Isotype	IgG
Storage Instruction	Store at -20°C for up to 1 year from the date of receipt, and avoid repeat freeze-thaw cycles.

TARGET INFORMATION

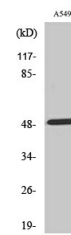
Gene ID	64428
Gene Symbol	CIAO3
Uniprot ID	CIAO3_HUMAN
Immunogen	The antiserum was produced against synthesized peptide derived from human NARFL at amino acid range 387-436
Immunogen Region	360-440 C-Term
Specificity	CIAO3 polyclonal antibody (Cytosolic Iron-Sulfur Assembly Component 3) binds to endogenous Cytosolic Iron-Sulfur Assembly Component 3 at the amino acid region 360-440 C-Term.
Immunogen Sequence	



Western blot analysis of lysates from A549 cells, using NARFL Antibody. The lane on the right is blocked with the synthesized peptide.



Western blot analysis of the lysates from HeLa cells using NARFL antibody.



Western blot analysis of various cells using NARFL Polyclonal Antibody cells nucleus extracted by Minute™ Cyttoplasmic and Nuclear Fractionation kit (SC-003, InventorTech, MN, USA).

This product is suitable for in-vitro studies under the RESEARCH USE ONLY [RUO] licence. This product must not be used as for diagnostic or other medical purposes.
St John's Laboratory Ltd, Knowledge Dock Business Centre, University Way, London, E16 2RD | Tel: 0208 223 3081