

Anti-NANOGP8 antibody (30-110 Internal) (STJ94342)

STJ94342

GENERAL INFORMATION

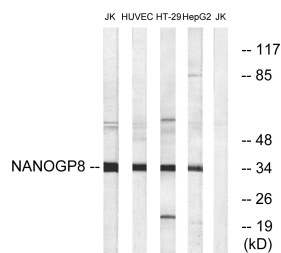
Product Type	Primary antibodies
Short Description	Rabbit polyclonal antibody anti-Homeobox Protein Nanogp8 (30-110 Internal) is suitable for use in Western Blot and ELISA research applications.
Applications	WB, ELISA
Host/Source	Rabbit
Reactivity	Human, Rat, Mouse

PRODUCT PROPERTIES

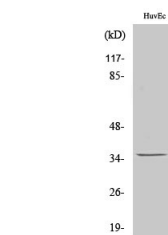
Clonality	Polyclonal
Clone ID	
Concentration	1 mg/mL
Conjugation	Unconjugated
Purification	The antibody was affinity-purified from rabbit anti-serum by affinity-chromatography.
Dilution Range	WB 1:500-1:2000 ELISA 1:10000
Formulation	PBS, 50% Glycerol, 0.5% BSA and 0.02% Sodium Azide.
Isotype	IgG
Storage	Store at -20°C for up to 1 year from the date of receipt, and avoid repeat freeze-thaw cycles.
Instruction	

TARGET INFORMATION

Gene ID	NA
Gene Symbol	NANOGP8
Uniprot ID	NANP8_HUMAN
Immunogen	The antiserum was produced against synthesized peptide derived from human NANOGP8 at amino acid range 51-100
Immunogen Region	30-110 Internal
Specificity	NANOGP8 polyclonal antibody (Homeobox Protein Nanogp8) binds to endogenous Homeobox Protein Nanogp8 at the amino acid region 30-110 Internal.
Immunogen Sequence	



Western blot analysis of lysates from HUVEC, HT-29, HepG2, and Jurkat cells, using NANOGP8 Antibody. The lane on the right is blocked with the synthesized peptide.



Western blot analysis of various cells using Nanog P8 Polyclonal Antibody diluted at 1: 2000