

Anti-NACAD antibody (350-430 Internal) (STJ94341)

STJ94341

GENERAL INFORMATION

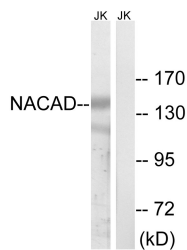
Product Type	Primary antibodies
Short Description	Rabbit polyclonal antibody anti-Nac-Alpha Domain-Containing Protein 1 (350-430 Internal) is suitable for use in Western Blot and ELISA research applications.
Applications	WB, ELISA
Host/Source	Rabbit
Reactivity	Human, Rat, Mouse

PRODUCT PROPERTIES

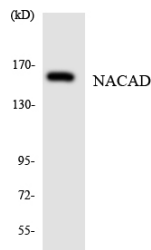
Clonality	Polyclonal
Clone ID	
Concentration	1 mg/mL
Conjugation	Unconjugated
Purification	The antibody was affinity-purified from rabbit anti-serum by affinity-chromatography.
Dilution Range	WB 1:500-1:2000 ELISA 1:10000
Formulation	PBS, 50% Glycerol, 0.5% BSA and 0.02% Sodium Azide.
Isotype	IgG
Storage	Store at -20°C for up to 1 year from the date of receipt, and avoid repeat freeze-thaw cycles.
Instruction	

TARGET INFORMATION

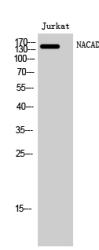
Gene ID	23148
Gene Symbol	NACAD
Uniprot ID	NACAD_HUMAN
Immunogen	The antiserum was produced against synthesized peptide derived from human NACAD at amino acid range 376-425
Immunogen Region	350-430 Internal
Specificity	NACAD polyclonal antibody (Nac-Alpha Domain-Containing Protein 1) binds to endogenous Nac-Alpha Domain-Containing Protein 1 at the amino acid region 350-430 Internal.
Immunogen Sequence	



Western blot analysis of lysates from Jurkat cells, using NACAD Antibody. The lane on the right is blocked with the synthesized peptide.



Western blot analysis of the lysates from HeLa cells using NACAD antibody.



Western blot analysis of Jurkat cells using NACAD Polyclonal Antibody

This product is suitable for in-vitro studies under the RESEARCH USE ONLY [RUO] licence. This product must not be used as for diagnostic or other medical purposes.
St John's Laboratory Ltd, Knowledge Dock Business Centre, University Way, London, E16 2RD | Tel: 0208 223 3081