

## Anti-ATP1A2 antibody (940-1020 C-Term) (STJ94339)

STJ94339

### GENERAL INFORMATION

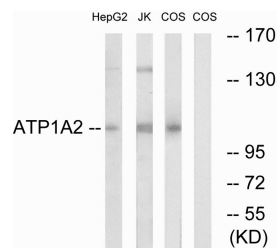
<b>Product Type</b>	Primary antibodies
<b>Short Description</b>	Rabbit polyclonal antibody anti-Sodium/Potassium-Transporting Atpase Subunit Alpha-2 (940-1020 C-Term) is suitable for use in Western Blot and ELISA research applications.
<b>Applications</b>	WB, ELISA
<b>Host/Source</b>	Rabbit
<b>Reactivity</b>	Human, Mouse, Rat, Monkey

### PRODUCT PROPERTIES

<b>Clonality</b>	Polyclonal
<b>Clone ID</b>	
<b>Concentration</b>	1 mg/mL
<b>Conjugation</b>	Unconjugated
<b>Purification</b>	The antibody was affinity-purified from rabbit anti-serum by affinity-chromatography.
<b>Dilution</b>	WB 1:500-1:2000
<b>Range</b>	ELISA 1:20000
<b>Formulation</b>	PBS, 50% Glycerol, 0.5% BSA and 0.02% Sodium Azide.
<b>Isotype</b>	IgG
<b>Storage</b>	Store at -20°C for up to 1 year from the date of receipt, and avoid repeat freeze-thaw cycles.
<b>Instruction</b>	

### TARGET INFORMATION

<b>Gene ID</b>	<a href="#">477</a>
<b>Gene Symbol</b>	<a href="#">ATP1A2</a>
<b>Uniprot ID</b>	<a href="#">AT1A2_HUMAN</a>
<b>Immunogen</b>	The antiserum was produced against synthesized peptide derived from human ATP1A2 at amino acid range 971-1020
<b>Immunogen Region</b>	940-1020 C-Term
<b>Specificity</b>	ATP1A2 polyclonal antibody (Sodium/Potassium-Transporting Atpase Subunit Alpha-2) binds to endogenous Sodium/Potassium-Transporting Atpase Subunit Alpha-2 at the amino acid region 940-1020 C-Term.
<b>Immunogen Sequence</b>	



Western blot analysis of lysates from COS7 cells, HepG2 cells, and Jurkat cells, using ATP1A2 Antibody. The lane on the right is blocked with the synthesized peptide.

This product is suitable for in-vitro studies under the RESEARCH USE ONLY [RUO] licence. This product must not be used as for diagnostic or other medical purposes.  
St John's Laboratory Ltd, Knowledge Dock Business Centre, University Way, London, E16 2RD | Tel: 0208 223 3081