

Anti-Pan-Na+ CP type Alpha antibody (Internal) (STJ94334)

STJ94334

GENERAL INFORMATION

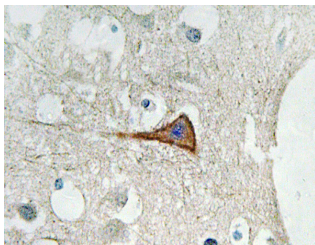
Product Type	Primary antibodies
Short Description	Rabbit polyclonal antibody anti-Pan-Sodium channel protein alpha (Internal) is suitable for use in Immunohistochemistry, Immunofluorescence and ELISA research applications.
Applications	IHC-P, IF-P, ELISA
Host/Source	Rabbit
Reactivity	Human, Mouse, Rat

PRODUCT PROPERTIES

Clonality	Polyclonal
Clone ID	
Concentration	1 mg/mL
Conjugation	Unconjugated
Purification	The antibody was affinity-purified from rabbit anti-serum by affinity-chromatography.
Dilution	IHC 1:100-1:300
Range	ELISA 1:5000
Formulation	PBS, 50% Glycerol, 0.5% BSA and 0.02% Sodium Azide.
Isotype	IgG
Storage	Store at -20°C for up to 1 year from the date of receipt, and avoid repeat freeze-thaw cycles.
Instruction	

TARGET INFORMATION

Gene ID	11280 6336 6326 SCN11A SCN10A SCNBA_HUMAN SCNAA_HUMAN SCN2A_HUMAN
Immunogen	The antiserum was produced against synthesized peptide derived from human Na+ CP type alpha-pan at amino acid range 1427-1476
Immunogen Region	Internal
Specificity	Pan-Na+ CP type Alpha polyclonal antibody (Sodium channel protein type 1 subunit alpha and Sodium channel protein type 2 subunit alpha and Sodium channel protein type 3 subunit alpha and Sodium channel protein type 4 subunit alpha and Sodium channel
Immunogen Sequence	



Immunohistochemistry analysis of Na+ CP type Alpha-pan antibody in paraffin-embedded human brain tissue.

This product is suitable for in-vitro studies under the RESEARCH USE ONLY [RUO] licence. This product must not be used as for diagnostic or other medical purposes.
St John's Laboratory Ltd, Knowledge Dock Business Centre, University Way, London, E16 2RD | Tel: 0208 223 3081