

Anti-SCN4A antibody (400-480 Internal) (STJ94331)

STJ94331

GENERAL INFORMATION

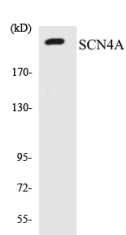
Product Type	Primary antibodies
Short Description	Rabbit polyclonal antibody anti-Sodium Channel Protein Type 4 Subunit Alpha (400-480 Internal) is suitable for use in Western Blot and ELISA research applications.
Applications	WB, ELISA
Host/Source	Rabbit
Reactivity	Human, Mouse, Rat

PRODUCT PROPERTIES

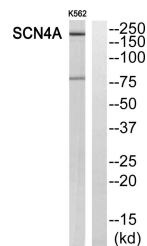
Clonality	Polyclonal
Clone ID	
Concentration	1 mg/mL
Conjugation	Unconjugated
Purification	The antibody was affinity-purified from rabbit anti-serum by affinity-chromatography.
Dilution Range	WB 1:500-1:2000 ELISA 1:10000
Formulation	PBS, 50% Glycerol, 0.5% BSA and 0.02% Sodium Azide.
Isotype	IgG
Storage Instruction	Store at -20°C for up to 1 year from the date of receipt, and avoid repeat freeze-thaw cycles.

TARGET INFORMATION

Gene ID	6329
Gene Symbol	SCN4A
Uniprot ID	SCN4A_HUMAN
Immunogen	The antiserum was produced against synthesized peptide derived from human SCN4A at amino acid range 431-480
Immunogen Region	400-480 Internal
Specificity	SCN4A polyclonal antibody (Sodium Channel Protein Type 4 Subunit Alpha) binds to endogenous Sodium Channel Protein Type 4 Subunit Alpha at the amino acid region 400-480 Internal.
Immunogen Sequence	



Western blot analysis of the lysates from COLO205 cells using SCN4A antibody.



Western blot analysis of SCN4A Antibody. The lane on the right is blocked with the SCN4A peptide.

This product is suitable for in-vitro studies under the RESEARCH USE ONLY [RUO] licence. This product must not be used as for diagnostic or other medical purposes.
St John's Laboratory Ltd, Knowledge Dock Business Centre, University Way, London, E16 2RD | Tel: 0208 223 3081