

Anti-SCN2B antibody (40-120 Internal) (STJ94330)

STJ94330

GENERAL INFORMATION

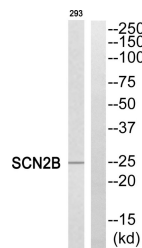
Product Type	Primary antibodies
Short Description	Rabbit polyclonal antibody anti-Sodium Channel Subunit Beta-2 (40-120 Internal) is suitable for use in Western Blot and ELISA research applications.
Applications	WB, ELISA
Host/Source	Rabbit
Reactivity	Human, Mouse, Rat

PRODUCT PROPERTIES

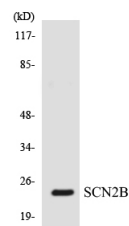
Clonality	Polyclonal
Clone ID	
Concentration	1 mg/mL
Conjugation	Unconjugated
Purification	The antibody was affinity-purified from rabbit anti-serum by affinity-chromatography.
Dilution Range	WB 1:500-1:2000 ELISA 1:20000
Formulation	PBS, 50% Glycerol, 0.5% BSA and 0.02% Sodium Azide.
Isotype	IgG
Storage Instruction	Store at -20°C for up to 1 year from the date of receipt, and avoid repeat freeze-thaw cycles.

TARGET INFORMATION

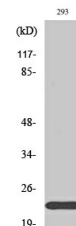
Gene ID	6327
Gene Symbol	SCN2B
Uniprot ID	SCN2B_HUMAN
Immunogen	The antiserum was produced against synthesized peptide derived from human SCN2B at amino acid range 71-120
Immunogen Region	40-120 Internal
Specificity	SCN2B polyclonal antibody (Sodium Channel Subunit Beta-2) binds to endogenous Sodium Channel Subunit Beta-2 at the amino acid region 40-120 Internal.
Immunogen Sequence	



Western blot analysis of SCN2B Antibody. The lane on the right is blocked with the SCN2B peptide.



Western blot analysis of the lysates from HepG2 cells using SCN2B antibody.



Western blot analysis of various cells using Na⁺ CP type II Beta Polyclonal Antibody

This product is suitable for in-vitro studies under the RESEARCH USE ONLY [RUO] licence. This product must not be used as for diagnostic or other medical purposes.
St John's Laboratory Ltd, Knowledge Dock Business Centre, University Way, London, E16 2RD | Tel: 0208 223 3081