

Anti-N/H/K-Ras antibody (10-90 N-Term) (STJ94325)

STJ94325

GENERAL INFORMATION

Product Type	Primary antibodies
Short Description	Rabbit polyclonal antibody anti-GTPase NRas and GTPase HRas and GTPase KRas (10-90 N-Term) is suitable for use in Western Blot, Immunohistochemistry, Immunofluorescence and ELISA research applications.
Applications	WB, IHC-P, IF-P, ELISA
Host/Source	Rabbit
Reactivity	Human, Mouse, Rat

PRODUCT PROPERTIES

Clonality	Polyclonal
Clone ID	
Concentration	1 mg/mL
Conjugation	Unconjugated
Purification	The antibody was affinity-purified from rabbit anti-serum by affinity-chromatography.
Dilution Range	WB 1:500-1:2000 IHC 1:100-1:300 ELISA 1:20000
Formulation	PBS, 50% Glycerol, 0.5% BSA and 0.02% Sodium Azide.
Isotype	IgG
Storage Instruction	Store at -20°C for up to 1 year from the date of receipt, and avoid repeat freeze-thaw cycles.

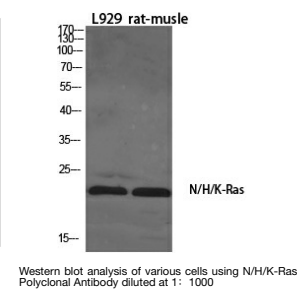
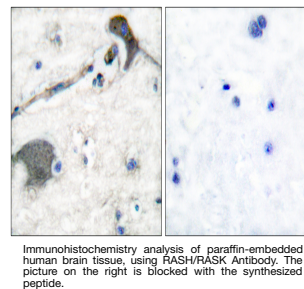
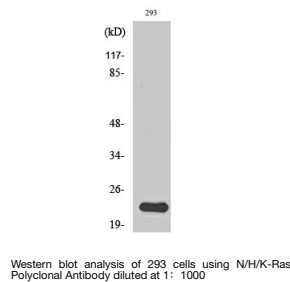
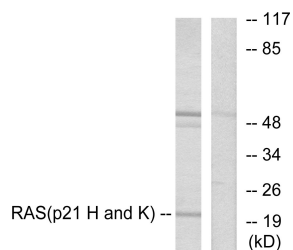
TARGET INFORMATION

Gene ID [3265](#)
[3845](#)
[4893](#)
[HRAS](#)
[KRAS](#)
[RASH_HUMAN](#)
[RASK_HUMAN](#)
[RASN_HUMAN](#)

Immunogen Region The antiserum was produced against synthesized peptide derived from human RASH/RASK at amino acid range 1-50
 10-90 N-Term

Specificity N/H/K-Ras polyclonal antibody (GTPase NRas and GTPase HRas and GTPase KRas) binds to endogenous GTPase NRas and GTPase HRas and GTPase KRas at the amino acid region 10-90 N-Term.

Immunogen Sequence



This product is suitable for in-vitro studies under the RESEARCH USE ONLY [RUO] licence. This product must not be used as for diagnostic or other medical purposes.
 St John's Laboratory Ltd, Knowledge Dock Business Centre, University Way, London, E16 2RD | Tel: 0208 223 3081