

## Anti-PKMYT1 antibody (20-100) (STJ94323)

STJ94323

### GENERAL INFORMATION

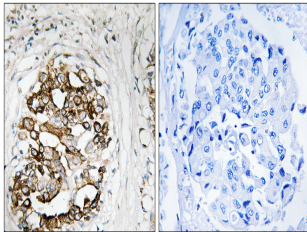
<b>Product Type</b>	Primary antibodies
<b>Short Description</b>	Rabbit polyclonal antibody anti-Membrane-Associated Tyrosine-And Threonine-Specific Cdc2-Inhibitory Kinase (20-100) is suitable for use in Western Blot, Immunohistochemistry, Immunofluorescence and ELISA research applications.
<b>Applications</b>	WB, IHC-P, IF-P, ELISA
<b>Host/Source</b>	Rabbit
<b>Reactivity</b>	Human, Rat, Mouse

### PRODUCT PROPERTIES

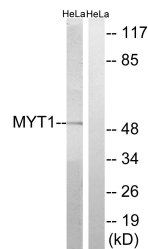
<b>Clonality</b>	Polyclonal
<b>Clone ID</b>	
<b>Concentration</b>	1 mg/mL
<b>Conjugation</b>	Unconjugated
<b>Purification</b>	The antibody was affinity-purified from rabbit anti-serum by affinity-chromatography.
<b>Dilution Range</b>	WB 1:500-1:2000 IHC 1:100-1:300 ELISA 1:20000
<b>Formulation</b>	PBS, 50% Glycerol, 0.5% BSA and 0.02% Sodium Azide.
<b>Isotype</b>	IgG
<b>Storage Instruction</b>	Store at -20°C for up to 1 year from the date of receipt, and avoid repeat freeze-thaw cycles.

### TARGET INFORMATION

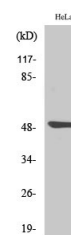
<b>Gene ID</b>	9088
<b>Gene Symbol</b>	PKMYT1
<b>Uniprot ID</b>	PMYT1_HUMAN
<b>Immunogen Region</b>	The antiserum was produced against synthesized peptide derived from human PKMYT1 at amino acid range 49-98
<b>Specificity</b>	PKMYT1 polyclonal antibody (Membrane-Associated Tyrosine-And Threonine-Specific Cdc2-Inhibitory Kinase) binds to endogenous Membrane-Associated Tyrosine-And Threonine-Specific Cdc2-Inhibitory Kinase at the amino acid region 20-100.
<b>Immunogen Sequence</b>	



Immunohistochemistry analysis of paraffin-embedded human breast carcinoma, using MYT1 Antibody. The picture on the right is blocked with the synthesized peptide.



Western blot analysis of lysates from HeLa cells, using MYT1 Antibody. The lane on the right is blocked with the synthesized peptide.



Western blot analysis of various cells using Myt 1 Polyclonal Antibody diluted at 1: 2000