

Anti-PPP1R12A antibody (590-670) (STJ94320)

STJ94320

GENERAL INFORMATION

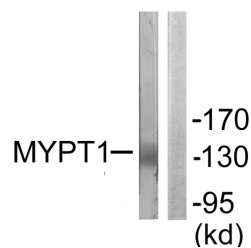
Product Type	Primary antibodies
Short Description	Rabbit polyclonal antibody anti-Protein Phosphatase 1 Regulatory Subunit 12a (590-670) is suitable for use in Western Blot, Immunohistochemistry, Immunofluorescence and ELISA research applications.
Applications	WB, IHC-P, IF-P, ELISA
Host/Source	Rabbit
Reactivity	Human, Mouse, Rat

PRODUCT PROPERTIES

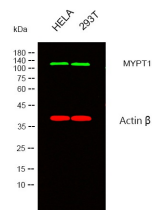
Clonality	Polyclonal
Clone ID	
Concentration	1 mg/mL
Conjugation	Unconjugated
Purification	The antibody was affinity-purified from rabbit anti-serum by affinity-chromatography.
Dilution Range	WB 1:500-1:2000 IHC 1:100-1:300 ELISA 1:5000
Formulation	PBS, 50% Glycerol, 0.5% BSA and 0.02% Sodium Azide.
Isotype	IgG
Storage Instruction	Store at -20°C for up to 1 year from the date of receipt, and avoid repeat freeze-thaw cycles.

TARGET INFORMATION

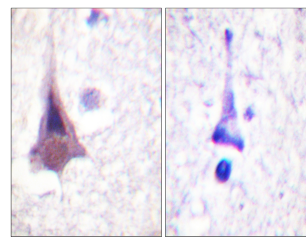
Gene ID	4659
Gene Symbol	PPP1R12A
Uniprot ID	MYPT1_HUMAN
Immunogen	The antiserum was produced against synthesized peptide derived from human MYPT1 at amino acid range 621-670
Immunogen Region	590-670
Specificity	PPP1R12A polyclonal antibody (Protein Phosphatase 1 Regulatory Subunit 12a) binds to endogenous Protein Phosphatase 1 Regulatory Subunit 12a at the amino acid region 590-670.
Immunogen Sequence	



Western blot analysis of lysates from NIH/3T3 cells, using MYPT1 Antibody. The lane on the right is blocked with the synthesized peptide.



Western blot analysis of lysates from HeLa, 293T cells, (Green) primary antibody was diluted at 1:1000, 4°C over night, secondary antibody was diluted at 1:10000, 37°C 1hour. (Red) loading control antibody was diluted at 1:5000 as loading control, 4°C over night, secondary antibody was diluted at 1:10000, 37°C 1hour.



Immunohistochemistry analysis of paraffin-embedded human brain tissue, using MYPT1 Antibody. The picture on the right is blocked with the synthesized peptide.

This product is suitable for in-vitro studies under the RESEARCH USE ONLY [RUO] licence. This product must not be used as for diagnostic or other medical purposes.
St John's Laboratory Ltd, Knowledge Dock Business Centre, University Way, London, E16 2RD | Tel: 0208 223 3081