

Anti-MYLK antibody (1670-1750 Internal) (STJ94307)

STJ94307

GENERAL INFORMATION

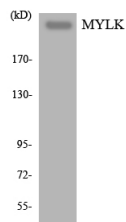
Product Type	Primary antibodies
Short Description	Rabbit polyclonal antibody anti-Myosin Light Chain Kinase-Smooth Muscle (1670-1750 Internal) is suitable for use in Western Blot and ELISA research applications.
Applications	WB, ELISA
Host/Source	Rabbit
Reactivity	Human, Mouse, Rat

PRODUCT PROPERTIES

Clonality	Polyclonal
Clone ID	
Concentration	1 mg/mL
Conjugation	Unconjugated
Purification	The antibody was affinity-purified from rabbit anti-serum by affinity-chromatography.
Dilution Range	WB 1:500-1:2000 ELISA 1:5000
Formulation	PBS, 50% Glycerol, 0.5% BSA and 0.02% Sodium Azide.
Isotype	IgG
Storage	Store at -20°C for up to 1 year from the date of receipt, and avoid repeat freeze-thaw cycles.
Instruction	

TARGET INFORMATION

Gene ID	4638
Gene Symbol	MYLK
Uniprot ID	MYLK_HUMAN
Immunogen	The antiserum was produced against synthesized peptide derived from human MYLK at amino acid range 1701-1750
Immunogen Region	1670-1750 Internal
Specificity	MYLK polyclonal antibody (Myosin Light Chain Kinase-Smooth Muscle) binds to endogenous Myosin Light Chain Kinase-Smooth Muscle at the amino acid region 1670-1750 Internal.
Immunogen Sequence	



Western blot analysis of the lysates from HT-29 cells using MYLK antibody.

This product is suitable for in-vitro studies under the RESEARCH USE ONLY [RUO] licence. This product must not be used as for diagnostic or other medical purposes.
 St John's Laboratory Ltd, Knowledge Dock Business Centre, University Way, London, E16 2RD | Tel: 0208 223 3081