

Anti-MYLIP antibody (130-210 Internal) (STJ94304)

STJ94304

GENERAL INFORMATION

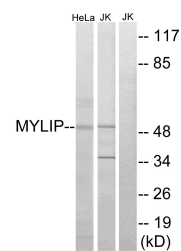
Product Type	Primary antibodies
Short Description	Rabbit polyclonal antibody anti-E3 Ubiquitin-Protein Ligase Mylip (130-210 Internal) is suitable for use in Western Blot, Immunohistochemistry, Immunofluorescence and ELISA research applications.
Applications	WB, IHC-P, IF-P, ELISA
Host/Source	Rabbit
Reactivity	Human, Mouse, Rat

PRODUCT PROPERTIES

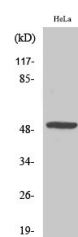
Clonality	Polyclonal
Clone ID	
Concentration	1 mg/mL
Conjugation	Unconjugated
Purification	The antibody was affinity-purified from rabbit anti-serum by affinity-chromatography.
Dilution Range	WB 1:500-1:2000 IHC 1:100-1:300 ELISA 1:20000
Formulation	PBS, 50% Glycerol, 0.5% BSA and 0.02% Sodium Azide.
Isotype	IgG
Storage Instruction	Store at -20°C for up to 1 year from the date of receipt, and avoid repeat freeze-thaw cycles.

TARGET INFORMATION

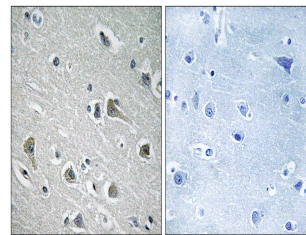
Gene ID	29116
Gene Symbol	MYLIP
Uniprot ID	MYLIP_HUMAN
Immunogen	The antiserum was produced against synthesized peptide derived from human MYLIP at amino acid range 161-210
Immunogen Region	130-210 Internal
Specificity	MYLIP polyclonal antibody (E3 Ubiquitin-Protein Ligase Mylip) binds to endogenous E3 Ubiquitin-Protein Ligase Mylip at the amino acid region 130-210 Internal.
Immunogen Sequence	



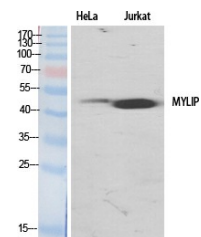
Western blot analysis of lysates from HeLa and Jurkat cells, using MYLIP Antibody. The lane on the right is blocked with the synthesized peptide.



Western blot analysis of Jurkat cells using MYLIP Polyclonal Antibody



Immunohistochemistry analysis of paraffin-embedded human brain tissue, using MYLIP Antibody. The picture on the right is blocked with the synthesized peptide.



Western blot analysis of various cells using MYLIP Polyclonal Antibody

This product is suitable for in-vitro studies under the RESEARCH USE ONLY [RUO] licence. This product must not be used as for diagnostic or other medical purposes.
St John's Laboratory Ltd, Knowledge Dock Business Centre, University Way, London, E16 2RD | Tel: 0208 223 3081