

Anti-MYL7 antibody (80-160 Internal) (STJ94303)

STJ94303

GENERAL INFORMATION

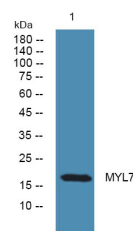
Product Type	Primary antibodies
Short Description	Rabbit polyclonal antibody anti-Myosin Regulatory Light Chain 2-Atrial Isoform (80-160 Internal) is suitable for use in Western Blot and ELISA research applications.
Applications	WB, ELISA
Host/Source	Rabbit
Reactivity	Human, Mouse, Rat, Monkey

PRODUCT PROPERTIES

Clonality	Polyclonal
Clone ID	
Concentration	1 mg/mL
Conjugation	Unconjugated
Purification	The antibody was affinity-purified from rabbit anti-serum by affinity-chromatography.
Dilution Range	WB 1:500-1:2000 ELISA 1:40000
Formulation	PBS, 50% Glycerol, 0.5% BSA and 0.02% Sodium Azide.
Isotype	IgG
Storage	Store at -20°C for up to 1 year from the date of receipt, and avoid repeat freeze-thaw cycles.
Instruction	

TARGET INFORMATION

Gene ID	58498
Gene Symbol	MYL7
Uniprot ID	MLRA_HUMAN
Immunogen	The antiserum was produced against synthesized peptide derived from human MYL7 at amino acid range 111-160
Immunogen Region	80-160 Internal
Specificity	MYL7 polyclonal antibody (Myosin Regulatory Light Chain 2-Atrial Isoform) binds to endogenous Myosin Regulatory Light Chain 2-Atrial Isoform at the amino acid region 80-160 Internal.
Immunogen Sequence	



Western blot analysis of lysates from SH-SY5Y cells, primary antibody was diluted at 1:1000, 4°C over night

This product is suitable for in-vitro studies under the RESEARCH USE ONLY [RUO] licence. This product must not be used as for diagnostic or other medical purposes.
St John's Laboratory Ltd, Knowledge Dock Business Centre, University Way, London, E16 2RD | Tel: 0208 223 3081