

Anti-MYL3 antibody (40-120 Internal) (STJ94301)

STJ94301

GENERAL INFORMATION

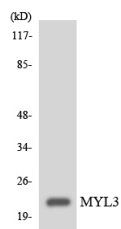
Product Type	Primary antibodies
Short Description	Rabbit polyclonal antibody anti-Myosin Light Chain 3 (40-120 Internal) is suitable for use in Western Blot and ELISA research applications.
Applications	WB, ELISA
Host/Source	Rabbit
Reactivity	Human, Rat, Mouse

PRODUCT PROPERTIES

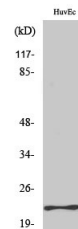
Clonality	Polyclonal
Clone ID	
Concentration	1 mg/mL
Conjugation	Unconjugated
Purification	The antibody was affinity-purified from rabbit anti-serum by affinity-chromatography.
Dilution Range	WB 1:500-1:2000 ELISA 1:20000
Formulation	PBS, 50% Glycerol, 0.5% BSA and 0.02% Sodium Azide.
Isotype	IgG
Storage Instruction	Store at -20°C for up to 1 year from the date of receipt, and avoid repeat freeze-thaw cycles.

TARGET INFORMATION

Gene ID	4634
Gene Symbol	MYL3
Uniprot ID	MYL3_HUMAN
Immunogen	The antiserum was produced against synthesized peptide derived from human MYL3 at amino acid range 71-120
Immunogen Region	40-120 Internal
Specificity	MYL3 polyclonal antibody (Myosin Light Chain 3) binds to endogenous Myosin Light Chain 3 at the amino acid region 40-120 Internal.
Immunogen Sequence	



Western blot analysis of the lysates from HeLa cells using MYL3 antibody.



Western blot analysis of various cells using MYL3 Polyclonal Antibody

This product is suitable for in-vitro studies under the RESEARCH USE ONLY [RUO] licence. This product must not be used as for diagnostic or other medical purposes.
St John's Laboratory Ltd, Knowledge Dock Business Centre, University Way, London, E16 2RD | Tel: 0208 223 3081