

Anti-MYH4 antibody (1650-1730 C-Term) (STJ94300)

STJ94300

GENERAL INFORMATION

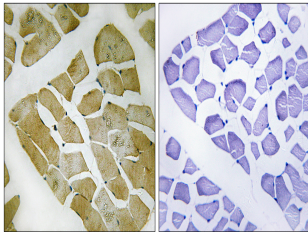
| | |
|--------------------------|--|
| Product Type | Primary antibodies |
| Short Description | Rabbit polyclonal antibody anti-Myosin-4 (1650-1730 C-Term) is suitable for use in Immunohistochemistry, Immunofluorescence and ELISA research applications. |
| Applications | IHC-P, IF-P, ELISA |
| Host/Source | Rabbit |
| Reactivity | Human, Rat, Mouse |

PRODUCT PROPERTIES

| | |
|-----------------------|--|
| Clonality | Polyclonal |
| Clone ID | |
| Concentration | 1 mg/mL |
| Conjugation | Unconjugated |
| Purification | The antibody was affinity-purified from rabbit anti-serum by affinity-chromatography. |
| Dilution Range | IHC 1:100-1:300 ELISA 1:5000 |
| Formulation | PBS, 50% Glycerol, 0.5% BSA and 0.02% Sodium Azide. |
| Isotype | IgG |
| Storage | Store at -20°C for up to 1 year from the date of receipt, and avoid repeat freeze-thaw cycles. |
| Instruction | |

TARGET INFORMATION

| | |
|---------------------------|--|
| Gene ID | 4622 |
| Gene Symbol | MYH4 |
| Uniprot ID | MYH4_HUMAN |
| Immunogen | The antiserum was produced against synthesized peptide derived from human MYH4 at amino acid range 1677-1726 |
| Immunogen Region | 1650-1730 C-Term |
| Specificity | MYH4 polyclonal antibody (Myosin-4) binds to endogenous Myosin-4 at the amino acid region 1650-1730 C-Term. |
| Immunogen Sequence | |



Immunohistochemistry analysis of paraffin-embedded human skeletal muscle, using MYH4 Antibody. The picture on the right is blocked with the synthesized peptide.