

## Anti-MYH15 antibody (600-680 Internal) (STJ94299)

STJ94299

### GENERAL INFORMATION

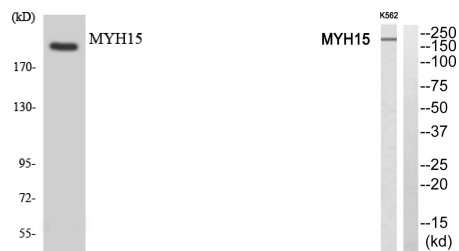
<b>Product Type</b>	Primary antibodies
<b>Short Description</b>	Rabbit polyclonal antibody anti-Myosin-15 (600-680 Internal) is suitable for use in Western Blot and ELISA research applications.
<b>Applications</b>	WB, ELISA
<b>Host/Source</b>	Rabbit
<b>Reactivity</b>	Human, Rat, Mouse

### PRODUCT PROPERTIES

<b>Clonality</b>	Polyclonal
<b>Clone ID</b>	
<b>Concentration</b>	1 mg/mL
<b>Conjugation</b>	Unconjugated
<b>Purification</b>	The antibody was affinity-purified from rabbit anti-serum by affinity-chromatography.
<b>Dilution Range</b>	WB 1:500-1:2000 ELISA 1:40000
<b>Formulation</b>	PBS, 50% Glycerol, 0.5% BSA and 0.02% Sodium Azide.
<b>Isotype</b>	IgG
<b>Storage Instruction</b>	Store at -20°C for up to 1 year from the date of receipt, and avoid repeat freeze-thaw cycles.

### TARGET INFORMATION

<b>Gene ID</b>	22989
<b>Gene Symbol</b>	MYH15
<b>Uniprot ID</b>	MYH15_HUMAN
<b>Immunogen</b>	The antiserum was produced against synthesized peptide derived from human MYH15 at amino acid range 624-673
<b>Immunogen Region</b>	600-680 Internal
<b>Specificity</b>	MYH15 polyclonal antibody (Myosin-15) binds to endogenous Myosin-15 at the amino acid region 600-680 Internal.
<b>Immunogen Sequence</b>	



Western blot analysis of the lysates from Jurkat cells using MYH15 antibody.

Western blot analysis of MYH15 Antibody. The lane on the right is blocked with the MYH15 peptide.

This product is suitable for in-vitro studies under the RESEARCH USE ONLY [RUO] licence. This product must not be used as for diagnostic or other medical purposes.  
St John's Laboratory Ltd, Knowledge Dock Business Centre, University Way, London, E16 2RD | Tel: 0208 223 3081