

## Anti-MYH14 antibody (1020-1100 Internal) (STJ94298)

STJ94298

### GENERAL INFORMATION

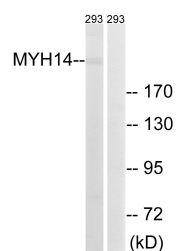
<b>Product Type</b>	Primary antibodies
<b>Short Description</b>	Rabbit polyclonal antibody anti-Myosin-14 (1020-1100 Internal) is suitable for use in Western Blot, Immunohistochemistry, Immunofluorescence and ELISA research applications.
<b>Applications</b>	WB, IHC-P, IF-P, ELISA
<b>Host/Source</b>	Rabbit
<b>Reactivity</b>	Human, Mouse

### PRODUCT PROPERTIES

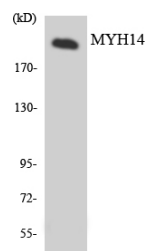
<b>Clonality</b>	Polyclonal
<b>Clone ID</b>	
<b>Concentration</b>	1 mg/mL
<b>Conjugation</b>	Unconjugated
<b>Purification</b>	The antibody was affinity-purified from rabbit anti-serum by affinity-chromatography.
<b>Dilution Range</b>	WB 1:500-1:2000 IHC 1:100-1:300 ELISA 1:5000
<b>Formulation</b>	PBS, 50% Glycerol, 0.5% BSA and 0.02% Sodium Azide.
<b>Isotype</b>	IgG
<b>Storage Instruction</b>	Store at -20°C for up to 1 year from the date of receipt, and avoid repeat freeze-thaw cycles.

### TARGET INFORMATION

<b>Gene ID</b>	79784
<b>Gene Symbol</b>	MYH14
<b>Uniprot ID</b>	MYH14_HUMAN
<b>Immunogen</b>	The antiserum was produced against synthesized peptide derived from human MYH14 at amino acid range 1051-1100
<b>Immunogen Region</b>	1020-1100 Internal
<b>Specificity</b>	MYH14 polyclonal antibody (Myosin-14) binds to endogenous Myosin-14 at the amino acid region 1020-1100 Internal.
<b>Immunogen Sequence</b>	



Western blot analysis of lysates from 293 cells, using MYH14 Antibody. The lane on the right is blocked with the synthesized peptide.



Western blot analysis of the lysates from HeLa cells using MYH14 antibody.



Western blot analysis of various cells using MYH14 Polyclonal Antibody diluted at 1: 1000