

Anti-MYF5 antibody (40-120) (STJ94295)

STJ94295

GENERAL INFORMATION

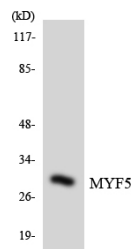
Product Type	Primary antibodies
Short Description	Rabbit polyclonal antibody anti-Myogenic Factor 5 (40-120) is suitable for use in Western Blot, Immunohistochemistry, Immunofluorescence, Immunocytochemistry and ELISA research applications.
Applications	WB, IHC-P, IF, ICC, ELISA
Host/Source	Rabbit
Reactivity	Human, Mouse, Monkey

PRODUCT PROPERTIES

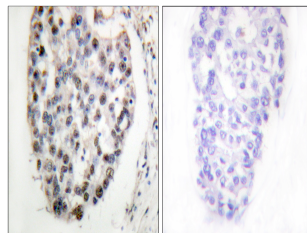
Clonality	Polyclonal
Clone ID	
Concentration	1 mg/mL
Conjugation	Unconjugated
Purification	The antibody was affinity-purified from rabbit anti-serum by affinity-chromatography.
Dilution Range	WB 1:500-1:2000 IHC 1:100-1:300 IF 1:200-1:1000 ELISA 1:20000
Formulation	PBS, 50% Glycerol, 0.5% BSA and 0.02% Sodium Azide.
Isotype	IgG
Storage Instruction	Store at -20°C for up to 1 year from the date of receipt, and avoid repeat freeze-thaw cycles.

TARGET INFORMATION

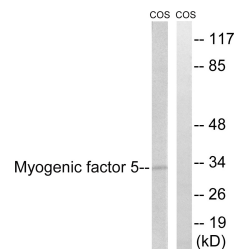
Gene ID	4617
Gene Symbol	MYF5
Uniprot ID	MYF5_HUMAN
Immunogen	The antiserum was produced against synthesized peptide derived from human MYF5 at amino acid range 21-70
Immunogen Region	40-120
Specificity	MYF5 polyclonal antibody (Myogenic Factor 5) binds to endogenous Myogenic Factor 5 at the amino acid region 40-120.
Immunogen Sequence	



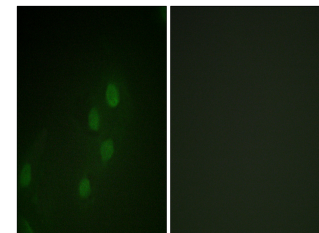
Western blot analysis of the lysates from K562 cells using MYF5 antibody.



Immunohistochemistry analysis of paraffin-embedded human breast carcinoma tissue, using MYF5 Antibody. The picture on the right is blocked with the synthesized peptide.



Western blot analysis of lysates from COS7 cells, using MYF5 Antibody. The lane on the right is blocked with the synthesized peptide.



Immunofluorescence analysis of HeLa cells, using MYF5 Antibody. The picture on the right is blocked with the synthesized peptide.