

Anti-MYF5 antibody (30-110 Internal) (STJ94294)

STJ94294

GENERAL INFORMATION

Product Type	Primary antibodies
Short Description	Rabbit polyclonal antibody anti-Myogenic Factor 5 (30-110 Internal) is suitable for use in Western Blot and ELISA research applications.
Applications	WB, ELISA
Host/Source	Rabbit
Reactivity	Human, Mouse

PRODUCT PROPERTIES

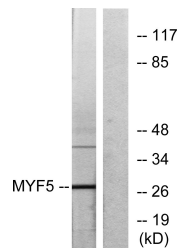
Clonality	Polyclonal
Clone ID	
Concentration	1 mg/mL
Conjugation	Unconjugated
Purification	The antibody was affinity-purified from rabbit anti-serum by affinity-chromatography.
Dilution Range	WB 1:500-1:2000 ELISA 1:40000
Formulation	PBS, 50% Glycerol, 0.5% BSA and 0.02% Sodium Azide.
Isotype	IgG
Storage Instruction	Store at -20°C for up to 1 year from the date of receipt, and avoid repeat freeze-thaw cycles.

TARGET INFORMATION

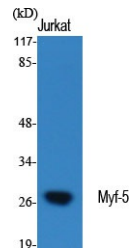
Gene ID	4617
Gene Symbol	MYF5
Uniprot ID	MYF5_HUMAN
Immunogen	The antiserum was produced against synthesized peptide derived from human MYF5 at amino acid range 61-110
Immunogen Region	30-110 Internal
Specificity	MYF5 polyclonal antibody (Myogenic Factor 5) binds to endogenous Myogenic Factor 5 at the amino acid region 30-110 Internal.
Immunogen Sequence	



Western blot analysis of HepG2 cells using Myf-5 Polyclonal Antibody cells nucleus extracted by Minute™ Cytoplasmic and Nuclear Fractionation kit (SC-003, Inventibiotech, MN, USA).



Western blot analysis of lysates from HepG2 cells, using MYF5 Antibody. The lane on the right is blocked with the synthesized peptide.



Western blot analysis of various cells using Myf-5 Polyclonal Antibody cells nucleus extracted by Minute™ Cytoplasmic and Nuclear Fractionation kit (SC-003, Inventibiotech, MN, USA).

This product is suitable for in-vitro studies under the RESEARCH USE ONLY [RUO] licence. This product must not be used as for diagnostic or other medical purposes.
St John's Laboratory Ltd, Knowledge Dock Business Centre, University Way, London, E16 2RD | Tel: 0208 223 3081