

Anti-MVK antibody (120-200 Internal) (STJ94289)

STJ94289

GENERAL INFORMATION

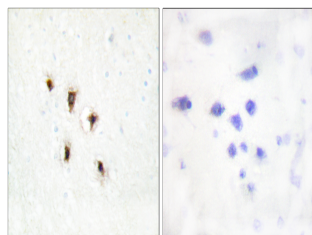
Product Type	Primary antibodies
Short Description	Rabbit polyclonal antibody anti-Mevalonate Kinase (120-200 Internal) is suitable for use in Western Blot, Immunohistochemistry, Immunofluorescence, Immunocytochemistry and ELISA research applications.
Applications	WB, IHC-P, IF, ICC, ELISA
Host/Source	Rabbit
Reactivity	Human, Monkey

PRODUCT PROPERTIES

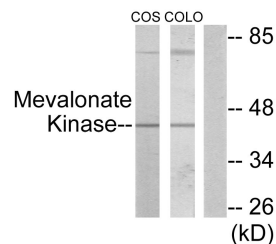
Clonality	Polyclonal
Clone ID	
Concentration	1 mg/mL
Conjugation	Unconjugated
Purification	The antibody was affinity-purified from rabbit anti-serum by affinity-chromatography.
Dilution Range	WB 1:500-1:2000 IHC 1:100-1:300 IF 1:200-1:1000 ELISA 1:10000
Formulation	PBS, 50% Glycerol, 0.5% BSA and 0.02% Sodium Azide.
Isotype	IgG
Storage Instruction	Store at -20°C for up to 1 year from the date of receipt, and avoid repeat freeze-thaw cycles.

TARGET INFORMATION

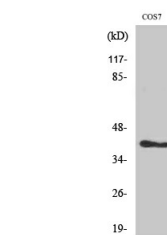
Gene ID	4598
Gene Symbol	MVK
Uniprot ID	KIME_HUMAN
Immunogen	The antiserum was produced against synthesized peptide derived from human Mevalonate Kinase at amino acid range 151-200
Immunogen Region	120-200 Internal
Specificity	MVK polyclonal antibody (Mevalonate Kinase) binds to endogenous Mevalonate Kinase at the amino acid region 120-200 Internal.
Immunogen Sequence	



Immunohistochemistry analysis of paraffin-embedded human brain tissue, using Mevalonate Kinase Antibody. The picture on the right is blocked with the synthesized peptide.



Western blot analysis of lysates from COS7 and COLO205 cells, using Mevalonate Kinase Antibody. The lane on the right is blocked with the synthesized peptide.



Western blot analysis of various cells using MVK Polyclonal Antibody