

## Anti-TFAM antibody (100-180 Internal) (STJ94281)

STJ94281

### GENERAL INFORMATION

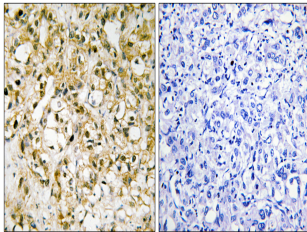
<b>Product Type</b>	Primary antibodies
<b>Short Description</b>	Rabbit polyclonal antibody anti-Transcription Factor A-Mitochondrial (100-180 Internal) is suitable for use in Western Blot, Immunohistochemistry, Immunofluorescence, Immunocytochemistry and ELISA research applications.
<b>Applications</b>	WB, IHC-P, IF, ICC, ELISA
<b>Host/Source</b>	Rabbit
<b>Reactivity</b>	Human, Rat, Mouse

### PRODUCT PROPERTIES

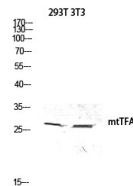
<b>Clonality</b>	Polyclonal
<b>Clone ID</b>	
<b>Concentration</b>	1 mg/mL
<b>Conjugation</b>	Unconjugated
<b>Purification</b>	The antibody was affinity-purified from rabbit anti-serum by affinity-chromatography.
<b>Dilution Range</b>	IHC 1:100-1:300 IF 1:200-1:1000 ELISA 1:20000
<b>Formulation</b>	PBS, 50% Glycerol, 0.5% BSA and 0.02% Sodium Azide.
<b>Isotype</b>	IgG
<b>Storage Instruction</b>	Store at -20°C for up to 1 year from the date of receipt, and avoid repeat freeze-thaw cycles.

### TARGET INFORMATION

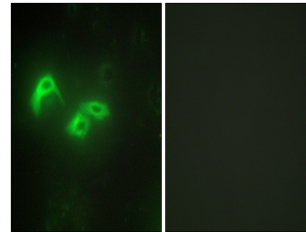
<b>Gene ID</b>	7019
<b>Gene Symbol</b>	TFAM
<b>Uniprot ID</b>	TFAM_HUMAN
<b>Immunogen</b>	The antiserum was produced against synthesized peptide derived from human TFAM at amino acid range 131-180
<b>Immunogen Region</b>	100-180 Internal
<b>Specificity</b>	TFAM polyclonal antibody (Transcription Factor A-Mitochondrial) binds to endogenous Transcription Factor A-Mitochondrial at the amino acid region 100-180 Internal.
<b>Immunogen Sequence</b>	



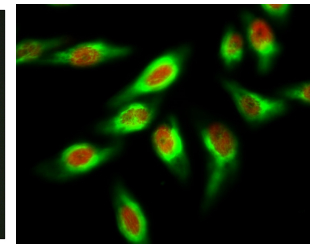
Immunohistochemistry analysis of paraffin-embedded human liver carcinoma tissue, using TFAM Antibody. The picture on the right is blocked with the synthesized peptide.



Western blot analysis of 293T 3T3 lysis using mtTFA antibody. Antibody was diluted at 1:500



Immunofluorescence analysis of HepG2 cells, using TFAM Antibody. The picture on the right is blocked with the synthesized peptide.



Immunofluorescence analysis of HeLa cells. 1. mtTFA Polyclonal Antibody (red) was diluted at 1:200 (4°C overnight). Beta-Tubulin monoclonal antibody (SG3) (green) was diluted at 1:200 (4°C overnight). 2. Goat Anti Rabbit Alexa Fluor 594 Catalog: (NA was diluted at 1:1000 (room temperature, 50min). Goat Anti Mouse Alexa Fluor 488 Catalog: (NA was diluted at 1:1000 (room temperature, 50min).

This product is suitable for in-vitro studies under the RESEARCH USE ONLY [RUO] licence. This product must not be used as for diagnostic or other medical purposes.  
St John's Laboratory Ltd, Knowledge Dock Business Centre, University Way, London, E16 2RD | Tel: 0208 223 3081