

Anti-MTA1 antibody (140-220 Internal) (STJ94272)

STJ94272

GENERAL INFORMATION

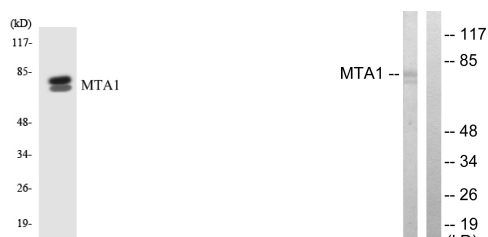
Product Type	Primary antibodies
Short Description	Rabbit polyclonal antibody anti-Metastasis-Associated Protein Mta1 (140-220 Internal) is suitable for use in Western Blot, Immunohistochemistry, Immunofluorescence and ELISA research applications.
Applications	WB, IHC-P, IF-P, ELISA
Host/Source	Rabbit
Reactivity	Human, Mouse, Rat

PRODUCT PROPERTIES

Clonality	Polyclonal
Clone ID	
Concentration	1 mg/mL
Conjugation	Unconjugated
Purification	The antibody was affinity-purified from rabbit anti-serum by affinity-chromatography.
Dilution	WB 1:500-1:2000
Range	IHC 1:100-1:300 ELISA 1:40000
Formulation	PBS, 50% Glycerol, 0.5% BSA and 0.02% Sodium Azide.
Isotype	IgG
Storage Instruction	Store at -20°C for up to 1 year from the date of receipt, and avoid repeat freeze-thaw cycles.

TARGET INFORMATION

Gene ID	9112
Gene Symbol	MTA1
Uniprot ID	MTA1_HUMAN
Immunogen	The antiserum was produced against synthesized peptide derived from human MTA1 at amino acid range 171-220
Immunogen Region	140-220 Internal
Specificity	MTA1 polyclonal antibody (Metastasis-Associated Protein Mta1) binds to endogenous Metastasis-Associated Protein Mta1 at the amino acid region 140-220 Internal.
Immunogen Sequence	



Western blot analysis of the lysates from K562 cells using MTA1 antibody.

Western blot analysis of lysates from Jurkat cells, using MTA1 Antibody. The lane on the right is blocked with the synthesized peptide.

This product is suitable for in-vitro studies under the RESEARCH USE ONLY [RUO] licence. This product must not be used as for diagnostic or other medical purposes.
St John's Laboratory Ltd, Knowledge Dock Business Centre, University Way, London, E16 2RD | Tel: 0208 223 3081