

Anti-STK24 antibody (290-370 C-Term) (STJ94269)

STJ94269

GENERAL INFORMATION

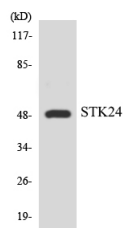
Product Type	Primary antibodies
Short Description	Rabbit polyclonal antibody anti-Serine/Threonine-Protein Kinase 24 (290-370 C-Term) is suitable for use in Western Blot, Immunohistochemistry, Immunofluorescence and ELISA research applications.
Applications	WB, IHC-P, IF-P, ELISA
Host/Source	Rabbit
Reactivity	Human, Mouse, Rat

PRODUCT PROPERTIES

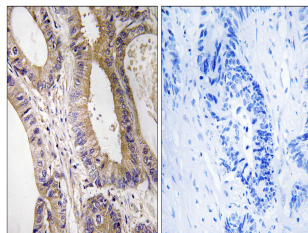
Clonality	Polyclonal
Clone ID	
Concentration	1 mg/mL
Conjugation	Unconjugated
Purification	The antibody was affinity-purified from rabbit anti-serum by affinity-chromatography.
Dilution Range	WB 1:500-1:2000 IHC 1:100-1:300 ELISA 1:40000
Formulation	PBS, 50% Glycerol, 0.5% BSA and 0.02% Sodium Azide.
Isotype	IgG
Storage Instruction	Store at 20°C for up to 1 year from the date of receipt, and avoid repeat freeze-thaw cycles.

TARGET INFORMATION

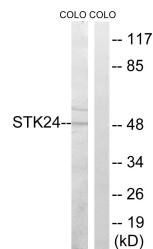
Gene ID	8428
Gene Symbol	STK24
Uniprot ID	STK24_HUMAN
Immunogen	The antiserum was produced against synthesized peptide derived from human STK24 at amino acid range 319-368
Immunogen Region	290-370 C-Term
Specificity	STK24 polyclonal antibody (Serine/Threonine-Protein Kinase 24) binds to endogenous Serine/Threonine-Protein Kinase 24 at the amino acid region 290-370 C-Term.
Immunogen Sequence	



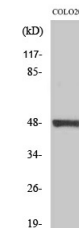
Western blot analysis of the lysates from COLO205 cells using STK24 antibody.



Immunohistochemistry analysis of paraffin-embedded human colon carcinoma tissue, using STK24 Antibody. The picture on the right is blocked with the synthesized peptide.



Western blot analysis of lysates from COLO cells, using STK24 Antibody. The lane on the right is blocked with the synthesized peptide.



Western blot analysis of various cells using MST-3 Polyclonal Antibody diluted at 1: 1000