

Anti-RPS6KA4 antibody (500-580) (STJ94268)

STJ94268

GENERAL INFORMATION

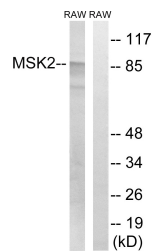
Product Type	Primary antibodies
Short Description	Rabbit polyclonal antibody anti-Ribosomal Protein S6 Kinase Alpha-4 (500-580) is suitable for use in Western Blot, Immunohistochemistry, Immunofluorescence and ELISA research applications.
Applications	WB, IHC-P, IF-P, ELISA
Host/Source	Rabbit
Reactivity	Human, Mouse

PRODUCT PROPERTIES

Clonality	Polyclonal
Clone ID	
Concentration	1 mg/mL
Conjugation	Unconjugated
Purification	The antibody was affinity-purified from rabbit anti-serum by affinity-chromatography.
Dilution Range	WB 1:500-1:2000 IHC 1:100-1:300 ELISA 1:5000
Formulation	PBS, 50% Glycerol, 0.5% BSA and 0.02% Sodium Azide.
Isotype	IgG
Storage Instruction	Store at -20°C for up to 1 year from the date of receipt, and avoid repeat freeze-thaw cycles.

TARGET INFORMATION

Gene ID	8986
Gene Symbol	RPS6KA4
Uniprot ID	KS6A4_HUMAN
Immunogen	The antiserum was produced against synthesized peptide derived from human MSK2 at amino acid range 531-580
Immunogen Region	500-580
Specificity	RPS6KA4 polyclonal antibody (Ribosomal Protein S6 Kinase Alpha-4) binds to endogenous Ribosomal Protein S6 Kinase Alpha-4 at the amino acid region 500-580.
Immunogen Sequence	



Western blot analysis of lysates from Raw264.7 cells, treated with UV 5', using MSK2 Antibody. The lane on the right is blocked with the synthesized peptide.