

Anti-RPS6KA5 antibody (520-600) (STJ94267)

STJ94267

GENERAL INFORMATION

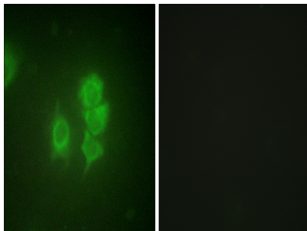
Product Type	Primary antibodies
Short Description	Rabbit polyclonal antibody anti-Ribosomal Protein S6 Kinase Alpha-5 (520-600) is suitable for use in Western Blot, Immunohistochemistry, Immunofluorescence, Immunocytochemistry and ELISA research applications.
Applications	WB, IHC-P, IF, ICC, ELISA
Host/Source	Rabbit
Reactivity	Human, Mouse

PRODUCT PROPERTIES

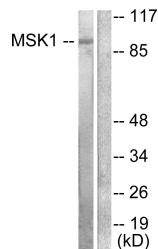
Clonality	Polyclonal
Clone ID	
Concentration	1 mg/mL
Conjugation	Unconjugated
Purification	The antibody was affinity-purified from rabbit anti-serum by affinity-chromatography.
Dilution Range	WB 1:500-1:2000 IHC 1:100-1:300 IF 1:200-1:1000 ELISA 1:10000
Formulation	PBS, 50% Glycerol, 0.5% BSA and 0.02% Sodium Azide.
Isotype	IgG
Storage Instruction	Store at -20°C for up to 1 year from the date of receipt, and avoid repeat freeze-thaw cycles.

TARGET INFORMATION

Gene ID	9252
Gene Symbol	RPS6KA5
Uniprot ID	KS6A5_HUMAN
Immunogen	The antiserum was produced against synthesized peptide derived from human MSK1 at amino acid range 551-600
Immunogen Region	520-600
Specificity	RPS6KA5 polyclonal antibody (Ribosomal Protein S6 Kinase Alpha-5) binds to endogenous Ribosomal Protein S6 Kinase Alpha-5 at the amino acid region 520-600.
Immunogen Sequence	



Immunofluorescence analysis of HUVEC cells, using MSK1 Antibody. The picture on the right is blocked with the synthesized peptide.



Western blot analysis of lysates from 293 cells, treated with UV 15', using MSK1 Antibody. The lane on the right is blocked with the synthesized peptide.



Western blot analysis of various cells using MSK1 Polyclonal Antibody diluted at 1: 1000

This product is suitable for in-vitro studies under the RESEARCH USE ONLY [RUO] licence. This product must not be used as for diagnostic or other medical purposes.
St John's Laboratory Ltd, Knowledge Dock Business Centre, University Way, London, E16 2RD | Tel: 0208 223 3081