

Anti-RPS6KA5 antibody (150-230) (STJ94264)

STJ94264

GENERAL INFORMATION

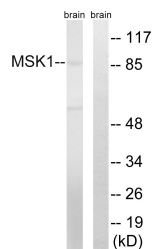
Product Type	Primary antibodies
Short Description	Rabbit polyclonal antibody anti-Ribosomal Protein S6 Kinase Alpha-5 (150-230) is suitable for use in Western Blot, Immunohistochemistry, Immunofluorescence and ELISA research applications.
Applications	WB, IHC-P, IF-P, ELISA
Host/Source	Rabbit
Reactivity	Human, Mouse

PRODUCT PROPERTIES

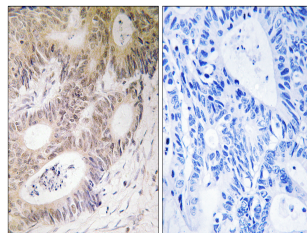
Clonality	Polyclonal
Clone ID	
Concentration	1 mg/mL
Conjugation	Unconjugated
Purification	The antibody was affinity-purified from rabbit anti-serum by affinity-chromatography.
Dilution Range	WB 1:500-1:2000 IHC 1:100-1:300 ELISA 1:40000
Formulation	PBS, 50% Glycerol, 0.5% BSA and 0.02% Sodium Azide.
Isotype	IgG
Storage Instruction	Store at -20°C for up to 1 year from the date of receipt, and avoid repeat freeze-thaw cycles.

TARGET INFORMATION

Gene ID	9252
Gene Symbol	RPS6KA5
Uniprot ID	KS6A5_HUMAN
Immunogen	The antiserum was produced against synthesized peptide derived from human MSK1 at amino acid range 181-230
Immunogen Region	150-230
Specificity	RPS6KA5 polyclonal antibody (Ribosomal Protein S6 Kinase Alpha-5) binds to endogenous Ribosomal Protein S6 Kinase Alpha-5 at the amino acid region 150-230.
Immunogen Sequence	



Western blot analysis of lysates from mouse brain, using MSK1 Antibody. The lane on the right is blocked with the synthesized peptide.



Immunohistochemistry analysis of paraffin-embedded human colon carcinoma tissue, using MSK1 Antibody. The picture on the right is blocked with the synthesized peptide.