

Anti-MRPS9 antibody (60-140 Internal) (STJ94258)

STJ94258

GENERAL INFORMATION

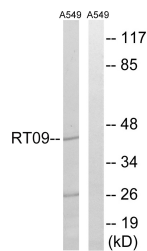
Product Type	Primary antibodies
Short Description	Rabbit polyclonal antibody anti-28s Ribosomal Protein S9-Mitochondrial (60-140 Internal) is suitable for use in Western Blot, Immunohistochemistry, Immunofluorescence and ELISA research applications.
Applications	WB, IHC-P, IF-P, ELISA
Host/Source	Rabbit
Reactivity	Human, Mouse, Rat

PRODUCT PROPERTIES

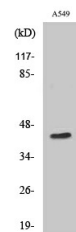
Clonality	Polyclonal
Clone ID	
Concentration	1 mg/mL
Conjugation	Unconjugated
Purification	The antibody was affinity-purified from rabbit anti-serum by affinity-chromatography.
Dilution Range	WB 1:500-1:2000 IHC 1:100-1:300 ELISA 1:40000
Formulation	PBS, 50% Glycerol, 0.5% BSA and 0.02% Sodium Azide.
Isotype	IgG
Storage Instruction	Store at 20°C for up to 1 year from the date of receipt, and avoid repeat freeze-thaw cycles.

TARGET INFORMATION

Gene ID	64965
Gene Symbol	MRPS9
Uniprot ID	RT09_HUMAN
Immunogen Region	The antiserum was produced against synthesized peptide derived from human MRPS9 at amino acid range 91-140 60-140 Internal
Specificity	MRPS9 polyclonal antibody (28s Ribosomal Protein S9-Mitochondrial) binds to endogenous 28s Ribosomal Protein S9-Mitochondrial at the amino acid region 60-140 Internal.
Immunogen Sequence	



Western blot analysis of lysates from A549 cells, using MRPS9 Antibody. The lane on the right is blocked with the synthesized peptide.



Western blot analysis of various cells using MRPS9 Polyclonal Antibody.

This product is suitable for in-vitro studies under the RESEARCH USE ONLY [RUO] licence. This product must not be used as for diagnostic or other medical purposes.
St John's Laboratory Ltd, Knowledge Dock Business Centre, University Way, London, E16 2RD | Tel: 0208 223 3081