

Anti-MRPS5 antibody (340-420 C-Term) (STJ94256)

STJ94256

GENERAL INFORMATION

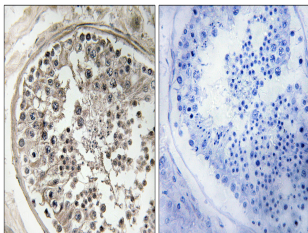
Product Type	Primary antibodies
Short Description	Rabbit polyclonal antibody anti-28s Ribosomal Protein S5-Mitochondrial (340-420 C-Term) is suitable for use in Immunohistochemistry, Immunofluorescence and ELISA research applications.
Applications	IHC-P, IF-P, ELISA
Host/Source	Rabbit
Reactivity	Human, Rat, Mouse

PRODUCT PROPERTIES

Clonality	Polyclonal
Clone ID	
Concentration	1 mg/mL
Conjugation	Unconjugated
Purification	The antibody was affinity-purified from rabbit anti-serum by affinity-chromatography.
Dilution Range	IHC 1:100-1:300 ELISA 1:40000
Formulation	PBS, 50% Glycerol, 0.5% BSA and 0.02% Sodium Azide.
Isotype	IgG
Storage	Store at -20°C for up to 1 year from the date of receipt, and avoid repeat freeze-thaw cycles.
Instruction	

TARGET INFORMATION

Gene ID	64969
Gene Symbol	MRPS5
Uniprot ID	RT05_HUMAN
Immunogen	The antiserum was produced against synthesized peptide derived from human MRPS5 at amino acid range 367-416
Immunogen Region	340-420 C-Term
Specificity	MRPS5 polyclonal antibody (28s Ribosomal Protein S5-Mitochondrial) binds to endogenous 28s Ribosomal Protein S5-Mitochondrial at the amino acid region 340-420 C-Term.
Immunogen Sequence	



Immunohistochemistry analysis of paraffin-embedded human testis, using MRPS5 Antibody. The picture on the right is blocked with the synthesized peptide.