

## Anti-MRPS36 antibody (20-100 N-Term) (STJ94255)

STJ94255

### GENERAL INFORMATION

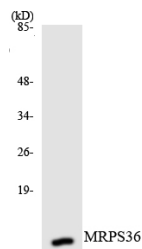
<b>Product Type</b>	Primary antibodies
<b>Short Description</b>	Rabbit polyclonal antibody anti-28s Ribosomal Protein S36-Mitochondrial (20-100 N-Term) is suitable for use in Western Blot, Immunohistochemistry, Immunofluorescence and ELISA research applications.
<b>Applications</b>	WB, IHC-P, IF-P, ELISA
<b>Host/Source</b>	Rabbit
<b>Reactivity</b>	Human, Rat, Mouse

### PRODUCT PROPERTIES

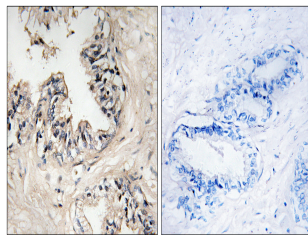
<b>Clonality</b>	Polyclonal
<b>Clone ID</b>	
<b>Concentration</b>	1 mg/mL
<b>Conjugation</b>	Unconjugated
<b>Purification</b>	The antibody was affinity-purified from rabbit anti-serum by affinity-chromatography.
<b>Dilution Range</b>	WB 1:500-1:2000 IHC 1:100-1:300 ELISA 1:10000
<b>Formulation</b>	PBS, 50% Glycerol, 0.5% BSA and 0.02% Sodium Azide.
<b>Isotype</b>	IgG
<b>Storage Instruction</b>	Store at -20°C for up to 1 year from the date of receipt, and avoid repeat freeze-thaw cycles.

### TARGET INFORMATION

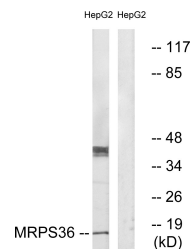
<b>Gene ID</b>	92259
<b>Gene Symbol</b>	MRPS36
<b>Uniprot ID</b>	RT36_HUMAN
<b>Immunogen</b>	The antiserum was produced against synthesized peptide derived from human MRPS36 at amino acid range 4-53
<b>Immunogen Region</b>	20-100 N-Term
<b>Specificity</b>	MRPS36 polyclonal antibody (28s Ribosomal Protein S36-Mitochondrial) binds to endogenous 28s Ribosomal Protein S36-Mitochondrial at the amino acid region 20-100 N-Term.
<b>Immunogen Sequence</b>	



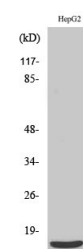
Western blot analysis of the lysates from K562 cells using MRPS36 antibody.



Immunohistochemistry analysis of paraffin-embedded human prostate carcinoma tissue, using MRPS36 Antibody. The picture on the right is blocked with the synthesized peptide.



Western blot analysis of lysates from HepG2 cells, using MRPS36 Antibody. The lane on the right is blocked with the synthesized peptide.



Western blot analysis of various cells using MRP-S36 Polyclonal Antibody