

Anti-MRPS35 antibody (180-260 Internal) (STJ94254)

STJ94254

GENERAL INFORMATION

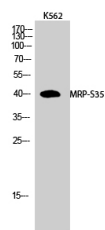
Product Type	Primary antibodies
Short Description	Rabbit polyclonal antibody anti-28s Ribosomal Protein S35-Mitochondrial (180-260 Internal) is suitable for use in Western Blot, Immunohistochemistry, Immunofluorescence and ELISA research applications.
Applications	WB, IHC-P, IF-P, ELISA
Host/Source	Rabbit
Reactivity	Human, Rat, Mouse

PRODUCT PROPERTIES

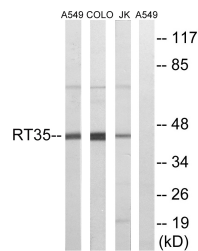
Clonality	Polyclonal
Clone ID	
Concentration	1 mg/mL
Conjugation	Unconjugated
Purification	The antibody was affinity-purified from rabbit anti-serum by affinity-chromatography.
Dilution Range	WB 1:500-1:2000 IHC 1:100-1:300 ELISA 1:40000
Formulation	PBS, 50% Glycerol, 0.5% BSA and 0.02% Sodium Azide.
Isotype	IgG
Storage Instruction	Store at -20°C for up to 1 year from the date of receipt, and avoid repeat freeze-thaw cycles.

TARGET INFORMATION

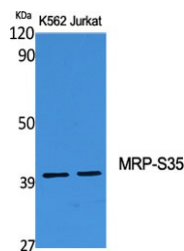
Gene ID	60488
Gene Symbol	MRPS35
Uniprot ID	RT35_HUMAN
Immunogen Region	The antiserum was produced against synthesized peptide derived from human MRPS35 at amino acid range 211-260
Immunogen Region	180-260 Internal
Specificity	MRPS35 polyclonal antibody (28s Ribosomal Protein S35-Mitochondrial) binds to endogenous 28s Ribosomal Protein S35-Mitochondrial at the amino acid region 180-260 Internal.
Immunogen Sequence	



Western blot analysis of K562 cells using MRP-S35 Polyclonal Antibody



Western blot analysis of lysates from Jurkat, COLO, and A549 cells, using MRP-S35 Antibody. The lane on the right is blocked with the synthesized peptide.



Western blot analysis of various cells using MRP-S35 Polyclonal Antibody

This product is suitable for in-vitro studies under the RESEARCH USE ONLY [RUO] licence. This product must not be used as for diagnostic or other medical purposes.
St John's Laboratory Ltd, Knowledge Dock Business Centre, University Way, London, E16 2RD | Tel: 0208 223 3081