

## Anti-MRPS34 antibody (160-240 C-Term) (STJ94253)

STJ94253

### GENERAL INFORMATION

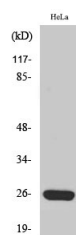
<b>Product Type</b>	Primary antibodies
<b>Short Description</b>	Rabbit polyclonal antibody anti-28s Ribosomal Protein S34-Mitochondrial (160-240 C-Term) is suitable for use in Western Blot and ELISA research applications.
<b>Applications</b>	WB, ELISA
<b>Host/Source</b>	Rabbit
<b>Reactivity</b>	Human, Mouse

### PRODUCT PROPERTIES

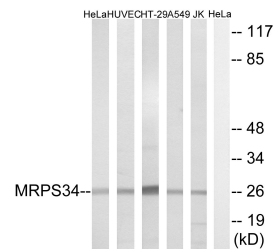
<b>Clonality</b>	Polyclonal
<b>Clone ID</b>	
<b>Concentration</b>	1 mg/mL
<b>Conjugation</b>	Unconjugated
<b>Purification</b>	The antibody was affinity-purified from rabbit anti-serum by affinity-chromatography.
<b>Dilution Range</b>	WB 1:500-1:2000 ELISA 1:10000
<b>Formulation</b>	PBS, 50% Glycerol, 0.5% BSA and 0.02% Sodium Azide.
<b>Isotype</b>	IgG
<b>Storage</b>	Store at -20°C for up to 1 year from the date of receipt, and avoid repeat freeze-thaw cycles.
<b>Instruction</b>	

### TARGET INFORMATION

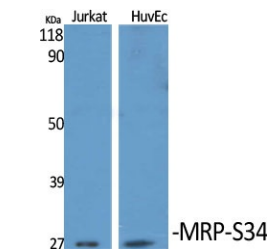
<b>Gene ID</b>	65993
<b>Gene Symbol</b>	MRPS34
<b>Uniprot ID</b>	RT34_HUMAN
<b>Immunogen</b>	The antiserum was produced against synthesized peptide derived from human MRPS34 at amino acid range 169-218
<b>Immunogen Region</b>	160-240 C-Term
<b>Specificity</b>	MRPS34 polyclonal antibody (28s Ribosomal Protein S34-Mitochondrial) binds to endogenous 28s Ribosomal Protein S34-Mitochondrial at the amino acid region 160-240 C-Term.
<b>Immunogen Sequence</b>	



Western blot analysis of Jurkat cells using MRP-S34 Polyclonal Antibody diluted at 1: 1000



Western blot analysis of lysates from HeLa, HUVEC, HT-29, A549, and Jurkat cells, using MRP-S34 Antibody. The lane on the right is blocked with the synthesized peptide.



Western blot analysis of various cells using MRP-S34 Polyclonal Antibody diluted at 1: 1000