

Anti-MRPS30 antibody (380-460 C-Term) (STJ94250)

STJ94250

GENERAL INFORMATION

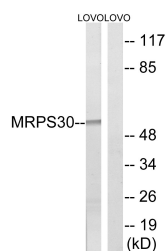
Product Type	Primary antibodies
Short Description	Rabbit polyclonal antibody anti-39s Ribosomal Protein S30-Mitochondrial (380-460 C-Term) is suitable for use in Western Blot and ELISA research applications.
Applications	WB, ELISA
Host/Source	Rabbit
Reactivity	Human, Rat, Mouse

PRODUCT PROPERTIES

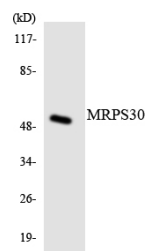
Clonality	Polyclonal
Clone ID	
Concentration	1 mg/mL
Conjugation	Unconjugated
Purification	The antibody was affinity-purified from rabbit anti-serum by affinity-chromatography.
Dilution Range	WB 1:500-1:2000 ELISA 1:10000
Formulation	PBS, 50% Glycerol, 0.5% BSA and 0.02% Sodium Azide.
Isotype	IgG
Storage Instruction	Store at -20°C for up to 1 year from the date of receipt, and avoid repeat freeze-thaw cycles.

TARGET INFORMATION

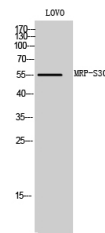
Gene ID	10884
Gene Symbol	MRPS30
Uniprot ID	RT30_HUMAN
Immunogen	The antiserum was produced against synthesized peptide derived from human MRPS30 at amino acid range 390-439
Immunogen Region	380-460 C-Term
Specificity	MRPS30 polyclonal antibody (39s Ribosomal Protein S30-Mitochondrial) binds to endogenous 39s Ribosomal Protein S30-Mitochondrial at the amino acid region 380-460 C-Term.
Immunogen Sequence	



Western blot analysis of lysates from LOVO cells, using MRPS30 Antibody. The lane on the right is blocked with the synthesized peptide.



Western blot analysis of the lysates from Jurkat cells using MRPS30 antibody.



Western blot analysis of LOVO cells using MRP-S30 Polyclonal Antibody

This product is suitable for in-vitro studies under the RESEARCH USE ONLY [RUO] licence. This product must not be used as for diagnostic or other medical purposes.
St John's Laboratory Ltd, Knowledge Dock Business Centre, University Way, London, E16 2RD | Tel: 0208 223 3081