

Anti-MRPS27 antibody (30-110 N-Term) (STJ94249)

STJ94249

GENERAL INFORMATION

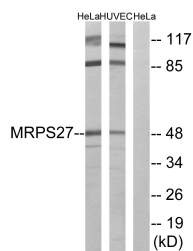
Product Type	Primary antibodies
Short Description	Rabbit polyclonal antibody anti-28s Ribosomal Protein S27-Mitochondrial (30-110 N-Term) is suitable for use in Western Blot and ELISA research applications.
Applications	WB, ELISA
Host/Source	Rabbit
Reactivity	Human, Rat, Mouse

PRODUCT PROPERTIES

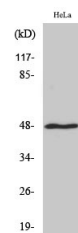
Clonality	Polyclonal
Clone ID	
Concentration	1 mg/mL
Conjugation	Unconjugated
Purification	The antibody was affinity-purified from rabbit anti-serum by affinity-chromatography.
Dilution Range	WB 1:500-1:2000 ELISA 1:20000
Formulation	PBS, 50% Glycerol, 0.5% BSA and 0.02% Sodium Azide.
Isotype	IgG
Storage Instruction	Store at -20°C for up to 1 year from the date of receipt, and avoid repeat freeze-thaw cycles.

TARGET INFORMATION

Gene ID	23107
Gene Symbol	MRPS27
Uniprot ID	RT27_HUMAN
Immunogen	The antiserum was produced against synthesized peptide derived from human MRPS27 at amino acid range 16-65
Immunogen Region	30-110 N-Term
Specificity	MRPS27 polyclonal antibody (28s Ribosomal Protein S27-Mitochondrial) binds to endogenous 28s Ribosomal Protein S27-Mitochondrial at the amino acid region 30-110 N-Term.
Immunogen Sequence	



Western blot analysis of lysates from HeLa and HUVEC cells, using MRPS27 Antibody. The lane on the right is blocked with the synthesized peptide.



Western blot analysis of various cells using MRP-S27 Polyclonal Antibody

This product is suitable for in-vitro studies under the RESEARCH USE ONLY [RUO] licence. This product must not be used as for diagnostic or other medical purposes.
St John's Laboratory Ltd, Knowledge Dock Business Centre, University Way, London, E16 2RD | Tel: 0208 223 3081