

Anti-MRPS25 antibody (110-190 C-Term) (STJ94248)

STJ94248

GENERAL INFORMATION

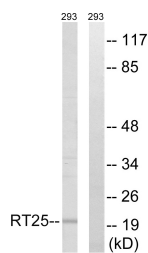
| | |
|--------------------------|---|
| Product Type | Primary antibodies |
| Short Description | Rabbit polyclonal antibody anti-28s Ribosomal Protein S25-Mitochondrial (110-190 C-Term) is suitable for use in Western Blot and ELISA research applications. |
| Applications | WB, ELISA |
| Host/Source | Rabbit |
| Reactivity | Human, Mouse, Rat |

PRODUCT PROPERTIES

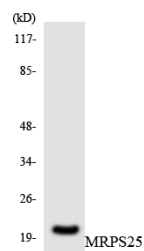
| | |
|----------------------------|--|
| Clonality | Polyclonal |
| Clone ID | |
| Concentration | 1 mg/mL |
| Conjugation | Unconjugated |
| Purification | The antibody was affinity-purified from rabbit anti-serum by affinity-chromatography. |
| Dilution Range | WB 1:500-1:2000 ELISA 1:40000 |
| Formulation | PBS, 50% Glycerol, 0.5% BSA and 0.02% Sodium Azide. |
| Isotype | IgG |
| Storage Instruction | Store at -20°C for up to 1 year from the date of receipt, and avoid repeat freeze-thaw cycles. |

TARGET INFORMATION

| | |
|---------------------------|---|
| Gene ID | 64432 |
| Gene Symbol | MRPS25 |
| Uniprot ID | RT25_HUMAN |
| Immunogen | The antiserum was produced against synthesized peptide derived from human MRPS25 at amino acid range 124-173 |
| Immunogen Region | 110-190 C-Term |
| Specificity | MRPS25 polyclonal antibody (28s Ribosomal Protein S25-Mitochondrial) binds to endogenous 28s Ribosomal Protein S25-Mitochondrial at the amino acid region 110-190 C-Term. |
| Immunogen Sequence | |



Western blot analysis of lysates from 293 cells, using MRPS25 Antibody. The lane on the right is blocked with the synthesized peptide.



Western blot analysis of the lysates from HepG2 cells using MRPS25 antibody.



Western blot analysis of various cells using MRP-S25 Polyclonal Antibody diluted at 1: 2000

This product is suitable for in-vitro studies under the RESEARCH USE ONLY [RUO] licence. This product must not be used as for diagnostic or other medical purposes.
St John's Laboratory Ltd, Knowledge Dock Business Centre, University Way, London, E16 2RD | Tel: 0208 223 3081