

## Anti-MRPS22 antibody (200-280 Internal) (STJ94246)

STJ94246

### GENERAL INFORMATION

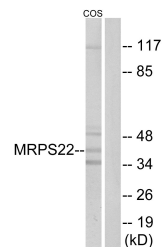
<b>Product Type</b>	Primary antibodies
<b>Short Description</b>	Rabbit polyclonal antibody anti-28s Ribosomal Protein S22-Mitochondrial (200-280 Internal) is suitable for use in Western Blot, Immunohistochemistry, Immunofluorescence, Immunocytochemistry and ELISA research applications.
<b>Applications</b>	WB, IHC-P, IF, ICC, ELISA
<b>Host/Source</b>	Rabbit
<b>Reactivity</b>	Human, Simian, Bovine, Hamster

### PRODUCT PROPERTIES

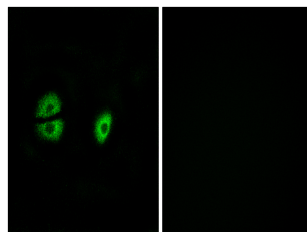
<b>Clonality</b>	Polyclonal
<b>Clone ID</b>	
<b>Concentration</b>	1 mg/mL
<b>Conjugation</b>	Unconjugated
<b>Purification</b>	The antibody was affinity-purified from rabbit anti-serum by affinity-chromatography.
<b>Dilution Range</b>	WB 1:500-1:2000 IHC 1:100-1:300 IF 1:200-1:1000 ELISA 1:40000
<b>Formulation</b>	PBS, 50% Glycerol, 0.5% BSA and 0.02% Sodium Azide.
<b>Isotype</b>	IgG
<b>Storage Instruction</b>	Store at -20°C for up to 1 year from the date of receipt, and avoid repeat freeze-thaw cycles.

### TARGET INFORMATION

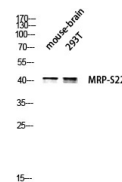
<b>Gene ID</b>	56945
<b>Gene Symbol</b>	MRPS22
<b>Uniprot ID</b>	RT22_HUMAN
<b>Immunogen</b>	The antiserum was produced against synthesized peptide derived from human MRPS22 at amino acid range 231-280
<b>Immunogen Region</b>	200-280 Internal
<b>Specificity</b>	MRPS22 polyclonal antibody (28s Ribosomal Protein S22-Mitochondrial) binds to endogenous 28s Ribosomal Protein S22-Mitochondrial at the amino acid region 200-280 Internal.
<b>Immunogen Sequence</b>	



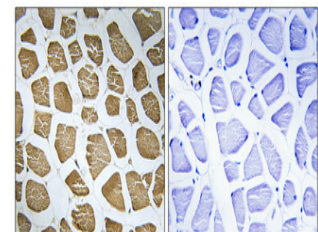
Western blot analysis of lysates from COS cells, using MRPS22 Antibody. The lane on the right is blocked with the synthesized peptide.



Immunofluorescence analysis of A549 cells, using MRPS22 Antibody. The picture on the right is blocked with the synthesized peptide.



Western blot analysis of mouse-brain 293T lysis using MRP-S22 antibody.



Immunohistochemical analysis of paraffin-embedded Human skeletal muscle. Antibody was diluted at 1:100 (4°C overnight). High-pressure and temperature Tris-EDTA, pH8.0 was used for antigen retrieval. Negative control (right) obtained from antibody was pre-absorbed by immunogen peptide.

This product is suitable for in-vitro studies under the RESEARCH USE ONLY [RUO] licence. This product must not be used as for diagnostic or other medical purposes.  
St John's Laboratory Ltd, Knowledge Dock Business Centre, University Way, London, E16 2RD | Tel: 0208 223 3081