

Anti-MRPS2 antibody (210-290 C-Term) (STJ94244)

STJ94244

GENERAL INFORMATION

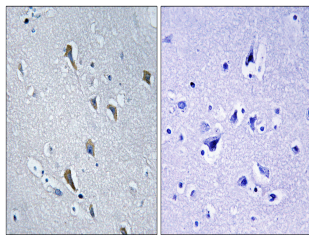
Product Type	Primary antibodies
Short Description	Rabbit polyclonal antibody anti-28s Ribosomal Protein S2-Mitochondrial (210-290 C-Term) is suitable for use in Western Blot, Immunohistochemistry, Immunofluorescence and ELISA research applications.
Applications	WB, IHC-P, IF-P, ELISA
Host/Source	Rabbit
Reactivity	Human, Rat, Mouse

PRODUCT PROPERTIES

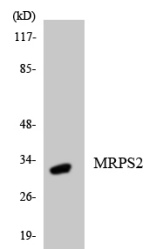
Clonality	Polyclonal
Clone ID	
Concentration	1 mg/mL
Conjugation	Unconjugated
Purification	The antibody was affinity-purified from rabbit anti-serum by affinity-chromatography.
Dilution Range	WB 1:500-1:2000 IHC 1:100-1:300 ELISA 1:5000
Formulation	PBS, 50% Glycerol, 0.5% BSA and 0.02% Sodium Azide.
Isotype	IgG
Storage Instruction	Store at -20°C for up to 1 year from the date of receipt, and avoid repeat freeze-thaw cycles.

TARGET INFORMATION

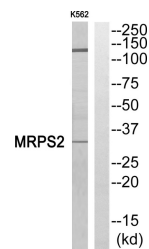
Gene ID	51116
Gene Symbol	MRPS2
Uniprot ID	RT02_HUMAN
Immunogen	The antiserum was produced against synthesized peptide derived from human MRPS2 at amino acid range 236-285
Immunogen Region	210-290 C-Term
Specificity	MRPS2 polyclonal antibody (28s Ribosomal Protein S2-Mitochondrial) binds to endogenous 28s Ribosomal Protein S2-Mitochondrial at the amino acid region 210-290 C-Term.
Immunogen Sequence	



Immunohistochemistry analysis of paraffin-embedded human brain, using MRPS2 Antibody. The lane on the right is blocked with the MRPS2 peptide.



Western blot analysis of the lysates from HepG2 cells using MRPS2 antibody.



Western blot analysis of MRPS2 Antibody. The lane on the right is blocked with the MRPS2 peptide.

This product is suitable for in-vitro studies under the RESEARCH USE ONLY [RUO] licence. This product must not be used as for diagnostic or other medical purposes.
St John's Laboratory Ltd, Knowledge Dock Business Centre, University Way, London, E16 2RD | Tel: 0208 223 3081