

Anti-MRPS16 antibody (50-130 Internal) (STJ94240)

STJ94240

GENERAL INFORMATION

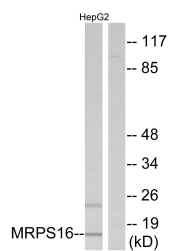
Product Type	Primary antibodies
Short Description	Rabbit polyclonal antibody anti-28s Ribosomal Protein S16-Mitochondrial (50-130 Internal) is suitable for use in Western Blot, Immunohistochemistry, Immunofluorescence and ELISA research applications.
Applications	WB, IHC-P, IF-P, ELISA
Host/Source	Rabbit
Reactivity	Human, Mouse

PRODUCT PROPERTIES

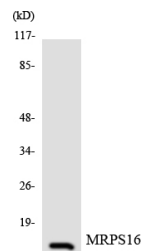
Clonality	Polyclonal
Clone ID	
Concentration	1 mg/mL
Conjugation	Unconjugated
Purification	The antibody was affinity-purified from rabbit anti-serum by affinity-chromatography.
Dilution Range	WB 1:500-1:2000 IHC 1:100-1:300 ELISA 1:40000
Formulation	PBS, 50% Glycerol, 0.5% BSA and 0.02% Sodium Azide.
Isotype	IgG
Storage Instruction	Store at 20°C for up to 1 year from the date of receipt, and avoid repeat freeze-thaw cycles.

TARGET INFORMATION

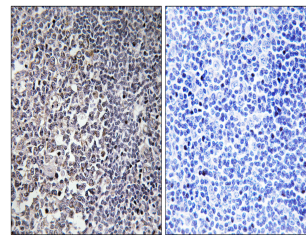
Gene ID	51021
Gene Symbol	MRPS16
Uniprot ID	RT16_HUMAN
Immunogen	The antiserum was produced against synthesized peptide derived from human MRPS16 at amino acid range 81-130
Immunogen Region	50-130 Internal
Specificity	MRPS16 polyclonal antibody (28s Ribosomal Protein S16-Mitochondrial) binds to endogenous 28s Ribosomal Protein S16-Mitochondrial at the amino acid region 50-130 Internal.
Immunogen Sequence	



Western blot analysis of lysates from HepG2 cells, using MRPS16 Antibody. The lane on the right is blocked with the synthesized peptide.



Western blot analysis of the lysates from COLO205 cells using MRPS16 antibody.



Immunohistochemistry analysis of paraffin-embedded human tonsil tissue, using MRPS16 Antibody. The picture on the right is blocked with the synthesized peptide.

This product is suitable for in-vitro studies under the RESEARCH USE ONLY [RUO] licence. This product must not be used as for diagnostic or other medical purposes.
St John's Laboratory Ltd, Knowledge Dock Business Centre, University Way, London, E16 2RD | Tel: 0208 223 3081