

Anti-MRPL9 antibody (180-260 C-Term) (STJ94238)

STJ94238

GENERAL INFORMATION

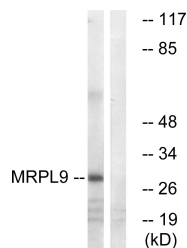
Product Type	Primary antibodies
Short Description	Rabbit polyclonal antibody anti-39s Ribosomal Protein L9-Mitochondrial (180-260 C-Term) is suitable for use in Western Blot and ELISA research applications.
Applications	WB, ELISA
Host/Source	Rabbit
Reactivity	Human, Rat, Mouse

PRODUCT PROPERTIES

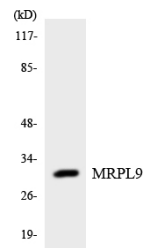
Clonality	Polyclonal
Clone ID	
Concentration	1 mg/mL
Conjugation	Unconjugated
Purification	The antibody was affinity-purified from rabbit anti-serum by affinity-chromatography.
Dilution Range	WB 1:500-1:2000 ELISA 1:40000
Formulation	PBS, 50% Glycerol, 0.5% BSA and 0.02% Sodium Azide.
Isotype	IgG
Storage	Store at -20°C for up to 1 year from the date of receipt, and avoid repeat freeze-thaw cycles.
Instruction	

TARGET INFORMATION

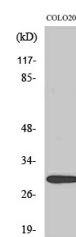
Gene ID	65005
Gene Symbol	MRPL9
Uniprot ID	RM09_HUMAN
Immunogen	The antiserum was produced against synthesized peptide derived from human MRPL9 at amino acid range 211-260
Immunogen Region	180-260 C-Term
Specificity	MRPL9 polyclonal antibody (39s Ribosomal Protein L9-Mitochondrial) binds to endogenous 39s Ribosomal Protein L9-Mitochondrial at the amino acid region 180-260 C-Term.
Immunogen Sequence	



Western blot analysis of lysates from COLO cells, using MRPL9 Antibody. The lane on the right is blocked with the synthesized peptide.



Western blot analysis of the lysates from HUVEC cells using MRPL9 antibody.



Western blot analysis of various cells using MRPL9 Polyclonal Antibody

This product is suitable for in-vitro studies under the RESEARCH USE ONLY [RUO] licence. This product must not be used as for diagnostic or other medical purposes.
St John's Laboratory Ltd, Knowledge Dock Business Centre, University Way, London, E16 2RD | Tel: 0208 223 3081