

## Anti-MRPL47 antibody (160-240 C-Term) (STJ94231)

STJ94231

### GENERAL INFORMATION

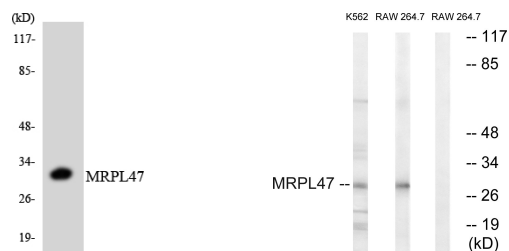
<b>Product Type</b>	Primary antibodies
<b>Short Description</b>	Rabbit polyclonal antibody anti-39s Ribosomal Protein L47-Mitochondrial (160-240 C-Term) is suitable for use in Western Blot and ELISA research applications.
<b>Applications</b>	WB, ELISA
<b>Host/Source</b>	Rabbit
<b>Reactivity</b>	Human, Rat, Mouse

### PRODUCT PROPERTIES

<b>Clonality</b>	Polyclonal
<b>Clone ID</b>	
<b>Concentration</b>	1 mg/mL
<b>Conjugation</b>	Unconjugated
<b>Purification</b>	The antibody was affinity-purified from rabbit anti-serum by affinity-chromatography.
<b>Dilution Range</b>	WB 1:500-1:2000 ELISA 1:10000
<b>Formulation</b>	PBS, 50% Glycerol, 0.5% BSA and 0.02% Sodium Azide.
<b>Isotype</b>	IgG
<b>Storage Instruction</b>	Store at -20°C for up to 1 year from the date of receipt, and avoid repeat freeze-thaw cycles.

### TARGET INFORMATION

<b>Gene ID</b>	57129
<b>Gene Symbol</b>	MRPL47
<b>Uniprot ID</b>	RM47_HUMAN
<b>Immunogen</b>	The antiserum was produced against synthesized peptide derived from human MRPL47 at amino acid range 191-240
<b>Immunogen Region</b>	160-240 C-Term
<b>Specificity</b>	MRPL47 polyclonal antibody (39s Ribosomal Protein L47-Mitochondrial) binds to endogenous 39s Ribosomal Protein L47-Mitochondrial at the amino acid region 160-240 C-Term.
<b>Immunogen Sequence</b>	



Western blot analysis of the lysates from 293 cells using MRPL47 antibody.

Western blot analysis of lysates from RAW264.7 and K562 cells, using MRPL47 Antibody. The lane on the right is blocked with the synthesized peptide.

This product is suitable for in-vitro studies under the RESEARCH USE ONLY [RUO] licence. This product must not be used as for diagnostic or other medical purposes.  
St John's Laboratory Ltd, Knowledge Dock Business Centre, University Way, London, E16 2RD | Tel: 0208 223 3081