

Anti-MRPL46 antibody (80-160 Internal) (STJ94230)

STJ94230

GENERAL INFORMATION

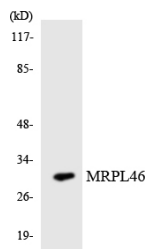
Product Type	Primary antibodies
Short Description	Rabbit polyclonal antibody anti-39s Ribosomal Protein L46-Mitochondrial (80-160 Internal) is suitable for use in Western Blot, Immunohistochemistry, Immunofluorescence and ELISA research applications.
Applications	WB, IHC-P, IF-P, ELISA
Host/Source	Rabbit
Reactivity	Human, Mouse, Rat

PRODUCT PROPERTIES

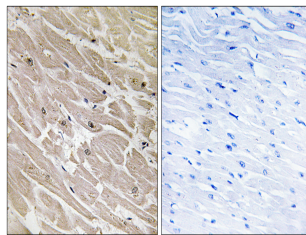
Clonality	Polyclonal
Clone ID	
Concentration	1 mg/mL
Conjugation	Unconjugated
Purification	The antibody was affinity-purified from rabbit anti-serum by affinity-chromatography.
Dilution Range	WB 1:500-1:2000 IHC 1:100-1:300 ELISA 1:40000
Formulation	PBS, 50% Glycerol, 0.5% BSA and 0.02% Sodium Azide.
Isotype	IgG
Storage Instruction	Store at -20°C for up to 1 year from the date of receipt, and avoid repeat freeze-thaw cycles.

TARGET INFORMATION

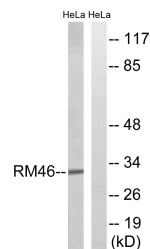
Gene ID	26589
Gene Symbol	MRPL46
Uniprot ID	RM46_HUMAN
Immunogen	The antiserum was produced against synthesized peptide derived from human MRPL46 at amino acid range 111-160
Immunogen Region	80-160 Internal
Specificity	MRPL46 polyclonal antibody (39s Ribosomal Protein L46-Mitochondrial) binds to endogenous 39s Ribosomal Protein L46-Mitochondrial at the amino acid region 80-160 Internal.
Immunogen Sequence	



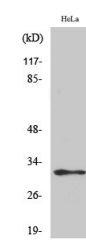
Western blot analysis of the lysates from HUVEC cells using MRPL46 antibody.



Immunohistochemistry analysis of paraffin-embedded human heart tissue, using MRPL46 Antibody. The picture on the right is blocked with the synthesized peptide.



Western blot analysis of lysates from HeLa cells, using MRPL46 Antibody. The lane on the right is blocked with the synthesized peptide.



Western blot analysis of various cells using MRPL46 Polyclonal Antibody diluted at 1: 500