

## Anti-MRPL41 antibody (50-130 Internal) (STJ94228)

STJ94228

### GENERAL INFORMATION

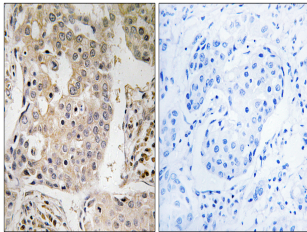
<b>Product Type</b>	Primary antibodies
<b>Short Description</b>	Rabbit polyclonal antibody anti-39s Ribosomal Protein L41-Mitochondrial (50-130 Internal) is suitable for use in Western Blot, Immunohistochemistry, Immunofluorescence and ELISA research applications.
<b>Applications</b>	WB, IHC-P, IF-P, ELISA
<b>Host/Source</b>	Rabbit
<b>Reactivity</b>	Human, Mouse, Rat

### PRODUCT PROPERTIES

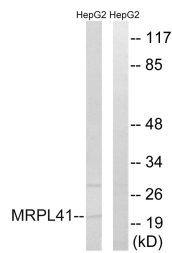
<b>Clonality</b>	Polyclonal
<b>Clone ID</b>	
<b>Concentration</b>	1 mg/mL
<b>Conjugation</b>	Unconjugated
<b>Purification</b>	The antibody was affinity-purified from rabbit anti-serum by affinity-chromatography.
<b>Dilution Range</b>	WB 1:500-1:2000 IHC 1:100-1:300 ELISA 1:40000
<b>Formulation</b>	PBS, 50% Glycerol, 0.5% BSA and 0.02% Sodium Azide.
<b>Isotype</b>	IgG
<b>Storage Instruction</b>	Store at -20°C for up to 1 year from the date of receipt, and avoid repeat freeze-thaw cycles.

### TARGET INFORMATION

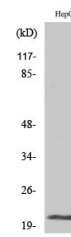
<b>Gene ID</b>	64975
<b>Gene Symbol</b>	MRPL41
<b>Uniprot ID</b>	RM41_HUMAN
<b>Immunogen</b>	The antiserum was produced against synthesized peptide derived from human MRPL41 at amino acid range 81-130
<b>Immunogen Region</b>	50-130 Internal
<b>Specificity</b>	MRPL41 polyclonal antibody (39s Ribosomal Protein L41-Mitochondrial) binds to endogenous 39s Ribosomal Protein L41-Mitochondrial at the amino acid region 50-130 Internal.
<b>Immunogen Sequence</b>	



Immunohistochemistry analysis of paraffin-embedded human breast carcinoma tissue, using MRPL41 Antibody. The picture on the right is blocked with the synthesized peptide.



Western blot analysis of lysates from HepG2 cells, using MRPL41 Antibody. The lane on the right is blocked with the synthesized peptide.



Western blot analysis of various cells using MRPL41 Polyclonal Antibody