

## Anti-MRPL40 antibody (70-150 Internal) (STJ94227)

STJ94227

### GENERAL INFORMATION

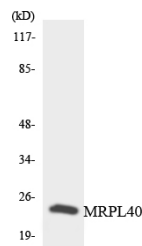
<b>Product Type</b>	Primary antibodies
<b>Short Description</b>	Rabbit polyclonal antibody anti-39s Ribosomal Protein L40-Mitochondrial (70-150 Internal) is suitable for use in Western Blot, Immunohistochemistry, Immunofluorescence and ELISA research applications.
<b>Applications</b>	WB, IHC-P, IF-P, ELISA
<b>Host/Source</b>	Rabbit
<b>Reactivity</b>	Human, Rat, Mouse

### PRODUCT PROPERTIES

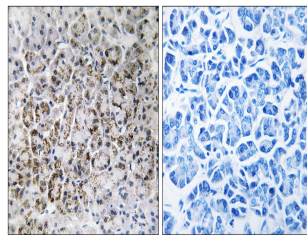
<b>Clonality</b>	Polyclonal
<b>Clone ID</b>	
<b>Concentration</b>	1 mg/mL
<b>Conjugation</b>	Unconjugated
<b>Purification</b>	The antibody was affinity-purified from rabbit anti-serum by affinity-chromatography.
<b>Dilution Range</b>	WB 1:500-1:2000 IHC 1:100-1:300 ELISA 1:40000
<b>Formulation</b>	PBS, 50% Glycerol, 0.5% BSA and 0.02% Sodium Azide.
<b>Isotype</b>	IgG
<b>Storage Instruction</b>	Store at -20°C for up to 1 year from the date of receipt, and avoid repeat freeze-thaw cycles.

### TARGET INFORMATION

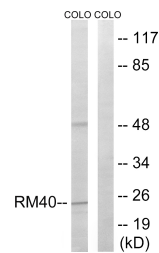
<b>Gene ID</b>	64976
<b>Gene Symbol</b>	MRPL40
<b>Uniprot ID</b>	RM40_HUMAN
<b>Immunogen</b>	The antiserum was produced against synthesized peptide derived from human MRPL40 at amino acid range 101-150
<b>Immunogen Region</b>	70-150 Internal
<b>Specificity</b>	MRPL40 polyclonal antibody (39s Ribosomal Protein L40-Mitochondrial) binds to endogenous 39s Ribosomal Protein L40-Mitochondrial at the amino acid region 70-150 Internal.
<b>Immunogen Sequence</b>	



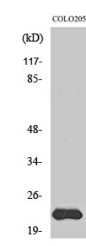
Western blot analysis of the lysates from Jurkat cells using MRPL40 antibody.



Immunohistochemistry analysis of paraffin-embedded human pancreas tissue, using MRPL40 Antibody. The picture on the right is blocked with the synthesized peptide.



Western blot analysis of lysates from COLO cells, using MRPL40 Antibody. The lane on the right is blocked with the synthesized peptide.



Western blot analysis of various cells using MRP-L40 Polyclonal Antibody diluted at 1: 1000