

Anti-MRPL33 antibody (20-100 N-Term) (STJ94223)

STJ94223

GENERAL INFORMATION

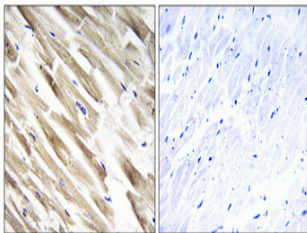
Product Type	Primary antibodies
Short Description	Rabbit polyclonal antibody anti-39s Ribosomal Protein L33-Mitochondrial (20-100 N-Term) is suitable for use in Immunohistochemistry, Immunofluorescence and ELISA research applications.
Applications	IHC-P, IF-P, ELISA
Host/Source	Rabbit
Reactivity	Human, Rat, Mouse

PRODUCT PROPERTIES

Clonality	Polyclonal
Clone ID	
Concentration	1 mg/mL
Conjugation	Unconjugated
Purification	The antibody was affinity-purified from rabbit anti-serum by affinity-chromatography.
Dilution Range	IHC 1:100-1:300 ELISA 1:10000
Formulation	PBS, 50% Glycerol, 0.5% BSA and 0.02% Sodium Azide.
Isotype	IgG
Storage Instruction	Store at -20°C for up to 1 year from the date of receipt, and avoid repeat freeze-thaw cycles.

TARGET INFORMATION

Gene ID	9553
Gene Symbol	MRPL33
Uniprot ID	RM33_HUMAN
Immunogen	The antiserum was produced against synthesized peptide derived from human MRPL33 at amino acid range 10-59
Immunogen Region	20-100 N-Term
Specificity	MRPL33 polyclonal antibody (39s Ribosomal Protein L33-Mitochondrial) binds to endogenous 39s Ribosomal Protein L33-Mitochondrial at the amino acid region 20-100 N-Term.
Immunogen Sequence	



Immunohistochemical analysis of paraffin-embedded Human heart. Antibody was diluted at 1:100 (4°C overnight). High-pressure and temperature Tris-EDTA, pH8.0 was used for antigen retrieval. Negative control (right) obtained from antibody was pre-absorbed by immunogen peptide.