

Anti-MRPL3 antibody (20-100 Internal) (STJ94221)

STJ94221

GENERAL INFORMATION

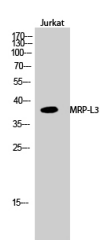
Product Type	Primary antibodies
Short Description	Rabbit polyclonal antibody anti-39s Ribosomal Protein L3-Mitochondrial (20-100 Internal) is suitable for use in Western Blot and ELISA research applications.
Applications	WB, ELISA
Host/Source	Rabbit
Reactivity	Human, Rat, Mouse

PRODUCT PROPERTIES

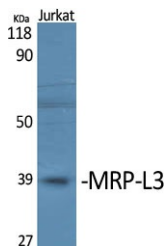
Clonality	Polyclonal
Clone ID	
Concentration	1 mg/mL
Conjugation	Unconjugated
Purification	The antibody was affinity-purified from rabbit anti-serum by affinity-chromatography.
Dilution Range	WB 1:500-1:2000 ELISA 1:5000
Formulation	PBS, 50% Glycerol, 0.5% BSA and 0.02% Sodium Azide.
Isotype	IgG
Storage	Store at -20°C for up to 1 year from the date of receipt, and avoid repeat freeze-thaw cycles.
Instruction	

TARGET INFORMATION

Gene ID	11222
Gene Symbol	MRPL3
Uniprot ID	RM03_HUMAN
Immunogen	Synthesized peptide derived from MRP-L3. at amino acid range: 20-100
Immunogen Region	20-100 Internal
Specificity	MRPL3 polyclonal antibody (39s Ribosomal Protein L3-Mitochondrial) binds to endogenous 39s Ribosomal Protein L3-Mitochondrial at the amino acid region 20-100 Internal.
Immunogen Sequence	



Western blot analysis of Jurkat cells using MRP-L3 Polyclonal Antibody



Western blot analysis of various cells using MRP-L3 Polyclonal Antibody

This product is suitable for in-vitro studies under the RESEARCH USE ONLY [RUO] licence. This product must not be used as for diagnostic or other medical purposes.
St John's Laboratory Ltd, Knowledge Dock Business Centre, University Way, London, E16 2RD | Tel: 0208 223 3081