

## Anti-MRPL22 antibody (60-140 Internal) (STJ94219)

STJ94219

### GENERAL INFORMATION

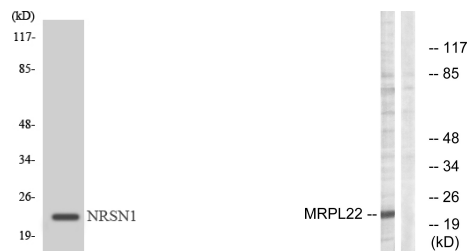
<b>Product Type</b>	Primary antibodies
<b>Short Description</b>	Rabbit polyclonal antibody anti-39s Ribosomal Protein L22-Mitochondrial (60-140 Internal) is suitable for use in Western Blot, Immunohistochemistry, Immunofluorescence and ELISA research applications.
<b>Applications</b>	WB, IHC-P, IF-P, ELISA
<b>Host/Source</b>	Rabbit
<b>Reactivity</b>	Human, Mouse, Rat

### PRODUCT PROPERTIES

<b>Clonality</b>	Polyclonal
<b>Clone ID</b>	
<b>Concentration</b>	1 mg/mL
<b>Conjugation</b>	Unconjugated
<b>Purification</b>	The antibody was affinity-purified from rabbit anti-serum by affinity-chromatography.
<b>Dilution Range</b>	WB 1:500-1:2000 IHC 1:100-1:300 ELISA 1:10000
<b>Formulation</b>	PBS, 50% Glycerol, 0.5% BSA and 0.02% Sodium Azide.
<b>Isotype</b>	IgG
<b>Storage Instruction</b>	Store at -20°C for up to 1 year from the date of receipt, and avoid repeat freeze-thaw cycles.

### TARGET INFORMATION

<b>Gene ID</b>	29093
<b>Gene Symbol</b>	MRPL22
<b>Uniprot ID</b>	RM22_HUMAN
<b>Immunogen</b>	The antiserum was produced against synthesized peptide derived from human MRPL22 at amino acid range 91-140
<b>Immunogen Region</b>	60-140 Internal
<b>Specificity</b>	MRPL22 polyclonal antibody (39s Ribosomal Protein L22-Mitochondrial) binds to endogenous 39s Ribosomal Protein L22-Mitochondrial at the amino acid region 60-140 Internal.
<b>Immunogen Sequence</b>	



Western blot analysis of the lysates from Jurkat cells using MRPL22 antibody.

Western blot analysis of lysates from HepG2 cells, using MRPL22 Antibody. The lane on the right is blocked with the synthesized peptide.

This product is suitable for in-vitro studies under the RESEARCH USE ONLY [RUO] licence. This product must not be used as for diagnostic or other medical purposes.  
St John's Laboratory Ltd, Knowledge Dock Business Centre, University Way, London, E16 2RD | Tel: 0208 223 3081