

Anti-MRPL21 antibody (100-180 Internal) (STJ94218)

STJ94218

GENERAL INFORMATION

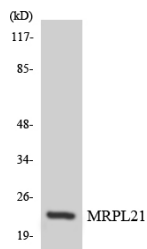
Product Type	Primary antibodies
Short Description	Rabbit polyclonal antibody anti-39s Ribosomal Protein L21-Mitochondrial (100-180 Internal) is suitable for use in Western Blot, Immunohistochemistry, Immunofluorescence and ELISA research applications.
Applications	WB, IHC-P, IF-P, ELISA
Host/Source	Rabbit
Reactivity	Human, Mouse

PRODUCT PROPERTIES

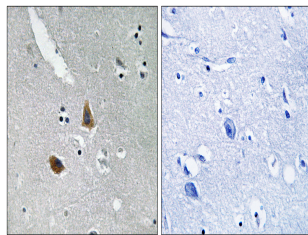
Clonality	Polyclonal
Clone ID	
Concentration	1 mg/mL
Conjugation	Unconjugated
Purification	The antibody was affinity-purified from rabbit anti-serum by affinity-chromatography.
Dilution Range	WB 1:500-1:2000 IHC 1:100-1:300 ELISA 1:40000
Formulation	PBS, 50% Glycerol, 0.5% BSA and 0.02% Sodium Azide.
Isotype	IgG
Storage Instruction	Store at -20°C for up to 1 year from the date of receipt, and avoid repeat freeze-thaw cycles.

TARGET INFORMATION

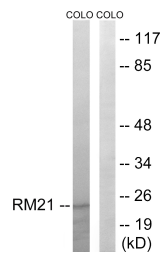
Gene ID	219927
Gene Symbol	MRPL21
Uniprot ID	RM21_HUMAN
Immunogen	The antiserum was produced against synthesized peptide derived from human MRPL21 at amino acid range 131-180
Immunogen Region	100-180 Internal
Specificity	MRPL21 polyclonal antibody (39s Ribosomal Protein L21-Mitochondrial) binds to endogenous 39s Ribosomal Protein L21-Mitochondrial at the amino acid region 100-180 Internal.
Immunogen Sequence	



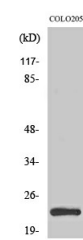
Western blot analysis of the lysates from HeLa cells using MRPL21 antibody.



Immunohistochemistry analysis of paraffin-embedded human brain tissue, using MRPL21 Antibody. The picture on the right is blocked with the synthesized peptide.



Western blot analysis of lysates from COLO cells, using MRPL21 Antibody. The lane on the right is blocked with the synthesized peptide.



Western blot analysis of various cells using MRP-L21 Polyclonal Antibody diluted at 1: 2000