

## Anti-MRPL13 antibody (90-170 C-Term) (STJ94211)

STJ94211

### GENERAL INFORMATION

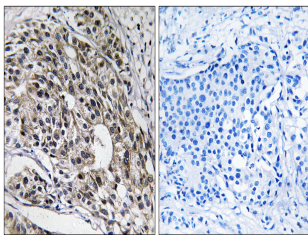
<b>Product Type</b>	Primary antibodies
<b>Short Description</b>	Rabbit polyclonal antibody anti-39s Ribosomal Protein L13-Mitochondrial (90-170 C-Term) is suitable for use in Western Blot, Immunohistochemistry, Immunofluorescence and ELISA research applications.
<b>Applications</b>	WB, IHC-P, IF-P, ELISA
<b>Host/Source</b>	Rabbit
<b>Reactivity</b>	Human, Mouse, Rat

### PRODUCT PROPERTIES

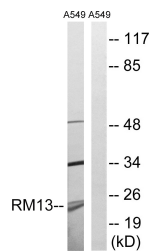
<b>Clonality</b>	Polyclonal
<b>Clone ID</b>	
<b>Concentration</b>	1 mg/mL
<b>Conjugation</b>	Unconjugated
<b>Purification</b>	The antibody was affinity-purified from rabbit anti-serum by affinity-chromatography.
<b>Dilution Range</b>	WB 1:500-1:2000 IHC 1:100-1:300 ELISA 1:40000
<b>Formulation</b>	PBS, 50% Glycerol, 0.5% BSA and 0.02% Sodium Azide.
<b>Isotype</b>	IgG
<b>Storage Instruction</b>	Store at -20°C for up to 1 year from the date of receipt, and avoid repeat freeze-thaw cycles.

### TARGET INFORMATION

<b>Gene ID</b>	28998
<b>Gene Symbol</b>	MRPL13
<b>Uniprot ID</b>	RM13_HUMAN
<b>Immunogen</b>	The antiserum was produced against synthesized peptide derived from human MRPL13 at amino acid range 121-170
<b>Immunogen Region</b>	90-170 C-Term
<b>Specificity</b>	MRPL13 polyclonal antibody (39s Ribosomal Protein L13-Mitochondrial) binds to endogenous 39s Ribosomal Protein L13-Mitochondrial at the amino acid region 90-170 C-Term.
<b>Immunogen Sequence</b>	



Immunohistochemistry analysis of paraffin-embedded human breast carcinoma tissue, using MRPL13 Antibody. The picture on the right is blocked with the synthesized peptide.



Western blot analysis of lysates from A549 cells, using MRPL13 Antibody. The lane on the right is blocked with the synthesized peptide.



Western blot analysis of various cells using MRP-L13 Polyclonal Antibody diluted at 1: 1000