

Anti-MRPL12 antibody (1-80 Internal) (STJ94210)

STJ94210

GENERAL INFORMATION

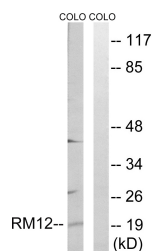
Product Type	Primary antibodies
Short Description	Rabbit polyclonal antibody anti-39s Ribosomal Protein L12-Mitochondrial (1-80 Internal) is suitable for use in Western Blot and ELISA research applications.
Applications	WB, ELISA
Host/Source	Rabbit
Reactivity	Human, Mouse

PRODUCT PROPERTIES

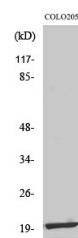
Clonality	Polyclonal
Clone ID	
Concentration	1 mg/mL
Conjugation	Unconjugated
Purification	The antibody was affinity-purified from rabbit anti-serum by affinity-chromatography.
Dilution Range	WB 1:500-1:2000 ELISA 1:40000
Formulation	PBS, 50% Glycerol, 0.5% BSA and 0.02% Sodium Azide.
Isotype	IgG
Storage	Store at -20°C for up to 1 year from the date of receipt, and avoid repeat freeze-thaw cycles.
Instruction	

TARGET INFORMATION

Gene ID	6182
Gene Symbol	MRPL12
Uniprot ID	RM12_HUMAN
Immunogen	The antiserum was produced against synthesized peptide derived from human MRPL12 at amino acid range 31-80
Immunogen Region	1-80 Internal
Specificity	MRPL12 polyclonal antibody (39s Ribosomal Protein L12-Mitochondrial) binds to endogenous 39s Ribosomal Protein L12-Mitochondrial at the amino acid region 1-80 Internal.
Immunogen Sequence	



Western blot analysis of lysates from COLO cells, using MRPL12 Antibody. The lane on the right is blocked with the synthesized peptide.



Western blot analysis of various cells using MRP-L12 Polyclonal Antibody.

This product is suitable for in-vitro studies under the RESEARCH USE ONLY [RUO] licence. This product must not be used as for diagnostic or other medical purposes.
St John's Laboratory Ltd, Knowledge Dock Business Centre, University Way, London, E16 2RD | Tel: 0208 223 3081